

A detailed illustration of a brown and white Ayrshire cow, shown in profile facing right. The cow is positioned centrally on the page. The background is a deep blue with a fine, sparkling texture. At the top, there are intricate white and gold swirling patterns. Below these, several blue five-pointed stars are scattered across the upper half of the page. The text 'U S A YRSHIRE' is prominently displayed in the middle section.

**U
S
A
YRSHIRE**

**2014-2015
Yearbook**

MILLER'S BURT BRAN MUFFIN

EXCELLENT-93 2E



MILLER'S BURT BRAN MUFFIN

PUREBRED AYRSHIRE 03/31/08 FEMALE
63970258

5-02 93 2E P9 +501

NM\$	+249								
PTA	+2.91SCC	+0.6PL	-0.2DPR						
PTA	+599M	+44F	+19P	57R					
PTA\$	+249CY			8/14					
PTA%	+1.11								
PTAT	+1.00T		55R	8/14					
PPA	+2607M	+203F	+80P						
CLASS	ST8	SR8	BD8	DF7	RA5	RW8	LS5	FA7	
	FU7	UH8	UW9	UC7	UD5	TP7	TL6	LR8	
GOLD									
2-02	2	305	18690	3.7	700	3.2	592		
		365	21880	3.8	821	3.2	704		
3-09	2	305	25300	7.0	1769	3.4	853		
		365	27890	6.8	1905	3.4	952		
5-01	2	305	27300	6.6	1798	3.2	871		
		365	31720	6.6	2085	3.2	1017		

 1ST JR 2 - 2010 SOUTHERN NATIONAL
 INT CHAMPION - 2010 SOUTHERN NATIONAL
 RES ALL-AMERICAN JR 2 - 2010
 3RD 5-YEAR-OLD - 2013 INTERNATIONAL
 1ST 5-YEAR-OLD - 2013 SOUTHERN NATIONAL
 HM ALL-AMERICAN 5-YEAR-OLD - 2013
 SR CHAMPION - 2014 OH STATE FAIR

DAUGHTER: MILLER'S BARRY BRANA, VG-86

2-06	2	305	16430	4.2	689	3.5	583		
		343	18030	4.2	769	3.6	649		
3-07	2	216	18950	3.9	730	3.2	601		
		PROJ	23810		868		768		

BRANA'S DAUGHTER:
 MILLER'S TRAVIS BAMBI
 3RD WI YEARLING - 2014 OH STATE FAIR

MILLER'S TRI-STAR BURT

63970243

MILLER'S DREAM BUFF

			100440953	6-04	91		2E		
GOLD						%	FAT	%	PRT
2-04	2	305	18980	4.5	854	3.2	606		
3-07	2	304	22690	4.1	925	3.4	766		
4-06	2	305	22900	4.0	914	3.3	748		
		365	25950	4.1	1057	3.3	863		
5-09	2	305	20090	4.0	808	3.5	704		
		317	20640	4.0	831	3.5	727		
6-09	2	305	20140	4.1	819	3.4	676		
7-10	2	302	15880	4.3	681	3.7	590		
LIFE	2064	132700	4.2	5579	3.4	4545			

GRANDDAM: MILLER'S JAMES BUFFY

			100059029	7-07	88				
GOLD						%	FAT	%	PRT
2-00	2	286	14840	3.8	568	3.3	487		
3-00	2	305	17050	4.2	723	3.5	589		
		331	17640	4.2	742	3.5	611		
4-01	2	281	17320	3.9	682	3.2	555		
5-00	2	293	20560	4.2	856	3.3	683		
6-00	2	305	20950	3.6	746	3.1	658		
		365	22830	3.5	807	3.1	719		
7-05	2	305	21910	3.7	816	3.2	704		
		365	24350	3.7	904	3.3	800		
9-02	2	305	21330	3.6	772	3.2	692		
LIFE	2742	168240	3.8	6456	3.3	5510			

MUFFIN'S SON, Sired by FAUCHER LUCK,
 IS CURRENTLY BEING USED ON THE FARM

IF INTERESTED IN EMBRYOS, PLEASE
 CONTACT US

Miller Family
JACK & MICK MILLER
 12261 Pemberville Rd., Bradner, OH 43406
 Jack (419) 288-2834 • Mick (419) 288-2210

GRAND-VIEW CALIMERO DEA-ET

EXCELLENT-91



GRAND-VIEW CALIMERO DEA-ET

95.37% AYRSHIRE 03/17/11 FEMALE
 100615777 95.37%
 3-04 91 P8 +476

NM\$ +182
 PTA +3.06SCC +2.2PL +0.5DPR
 PTA +23M +11F +8P 48R
 PTA\$ +182CY 8/14
 PTA% +.05 +.04
 PTAT +1.60T 50R 8/14
 PPA +1100M +53F +46P

CLASS ST8 SR6 BD7 DF6 RA4 RW6 LS4 FA6
 FUS UH6 UW4 UC7 UD7 TP7 TL3 LR7

GOLD % FAT % PRT
 2-00 2 305 18970 4.0 753 3.2 609
 365 21740 4.0 873 3.2 704

3RD SPRING YEARLING - 2012 INTERNATIONAL
 HM ALL-AMERICAN SPRING YEARLING - 2012
 2ND JR 2-YEAR-OLD - 2013 INTERNATIONAL
 RES ALL-AMERICAN JR 2-YEAR-OLD (TIE) - 2013
 GRAND CHAMPION, 2013 WI STATE SHOW
 INT CHAMPION, 2014 WI STATE SHOW

2ND 9TH GENERATION EX IN BREED!
 3/13 BURDETTE DAUGHTER DUE 6/15 TO
 POKER
 TWO 6/14 PREDATOR DAUGHTERS
 EMBRYOS BY PREDATOR
 WILL IVF TO REMINGTON IN DECEMBER

NUMEROUS EMBRYOS AVAILABLE FROM THIS
 COW FAMILY!

MARGOT CALIMERO

10310847C 90.75%
 PTA +3.04SCC +0.1PL +0.8DPR
 PTA +30M +14F +8P 95R
 PTA% +.07 +.04
 PTAT +1.20T 94R 8/14
 D/AV 19462M 3.9 761F 3.2 619P 8.6T

GRAND-VIEW BBBK DREAMER

100463697 7-02 93 3E

GOLD	%	FAT	%	PRT
2-06 2 305	14610 4.4	646 3.3	489	
	334 15770 4.5	702 3.4	531	
3-06 2 305	16510 3.6	598 3.3	541	
	364 17560 3.6	640 3.3	581	
4-09 2 305	21150 4.5	958 3.3	695	
	365 24310 4.4	1059 3.3	807	
6-08 2 305	20170 4.1	835 3.2	650	
	365 23650 4.1	964 3.3	774	

3RD FALL YEARLING - 2008 CENTRAL NATIONAL
 HM ALL-AMERICAN FALL YEARLING - 2008

GRANDDAM: GRAND-VIEW CORNELIUS DRAMA

100261866 7-02 91

GOLD	%	FAT	%	PRT
2-03 2 312	16510 4.1	680 3.2	521	
3-03 2 268	13910 4.0	554 3.2	447	
4-03 2 305	17950 4.0	715 3.2	570	
5-06 2 314	21560 4.0	856 3.1	674	
6-06 2 279	21450 4.0	857 3.0	654	

Grand-View Ayrshires

TIM & KATIE BUSCH

N6470 County Road C

Cecil, WI 54111

(920) 609-7476

tb1972@frontiernet.net

VAN-DE ORKKO CAITLIN CORKY

EXCELLENT-92 2E



VAN-DE ORKKO CAITLIN CORKY

100545377									95%
	6-03	92	2E	ELITE	P9				+565
NM\$	+534								
PTA	+2.77SCC	+3.5PL		+0.9DPR					
PTA	+1399M	+58F		+49P				59R	
PTA\$	+534CY							8/14	
PTA%									
PTAT	+ .70T			+ .03				53R	8/14
PPA	+4731M	+196F		+156P					
CLASS	ST9	SR9	BD9	DF9	RA7	RW8	LS7	FA3	
	FU3	UH6	UW9	UC9	UD2	TP6	TL8	LR7	
DHI				%	FAT	%	PRT		
1-11	2	305	22970	3.9	903	3.2	729		
		349	26100	3.9	1014	3.2	834		
3-01	2	305	25500	4.3	1097	3.4	859		
4-03	2	305	26990	3.9	1055	3.4	908		
5-10	2	173	18965	3.8	719	2.9	553		
		PROJ	30614	3.8	1190	2.9	993		

2ND JR 2-YEAR-OLD - 2010 INTERNATIONAL
 NOM ALL-AMERICAN JR 2-YEAR-OLD - 2010

#8 8/14 ELITE CPI COW
 2014 WISCONSIN COW OF THE YEAR

WORKING WITH TWO BURDETTE DAUGHTERS
 AND ONE REALITY DAUGHTER
 FOUR CONFIRMED ROCKSTAR FEMALE
 PREGNANCIES
 CONTINUING ON IVF PROGRAM
 DUE 3/15 TO KAMOURASKA BIGSTAR-ET
 GRANDSON, ALASKA, AT TAURUS

PUROLAN ORKKO FI

41531C									90%
PTA	+2.75SCC	+4.8PL		+2.1DPR					
PTA	+1016M	+32F		+49P				98R	
PTA%									
PTAT	- .30T							85R	8/14
D/AV	22895M	3.9	882F	3.2	737P			8.3T	

S&M-AYR TRIDENT CHERRY CAITLYN

100191064									
	4-00	90							
GOLD				%	FAT	%	PRT		
1-11	2	304	18830	3.8	707	2.9	541		
2-11	2	305	18860	3.6	684	2.9	555		
		330	19630	3.6	716	3.0	583		
3-11	2	305	21600	4.0	857	3.0	645		
		345	22290	4.0	889	3.0	669		
5-00	2	305	20330	4.0	806	2.9	587		
		350	21560	4.0	862	2.9	629		
6-02	2	305	22480	3.7	824	2.7	617		
		307	22560	3.7	827	2.7	619		
7-01	2	305	19560	3.8	734	2.8	540		
		365	21160	3.7	792	2.8	592		
LIFE	2024	126490	3.8	4810	2.9	3649			

GRANDDAM: S&M-AYR BOYS CHERRY

100008685									
	4-03	89							
GOLD				%	FAT	%	PRT		
3-03	2	305	17140	4.2	712	3.2	549		
		312	17330	4.2	722	3.2	556		

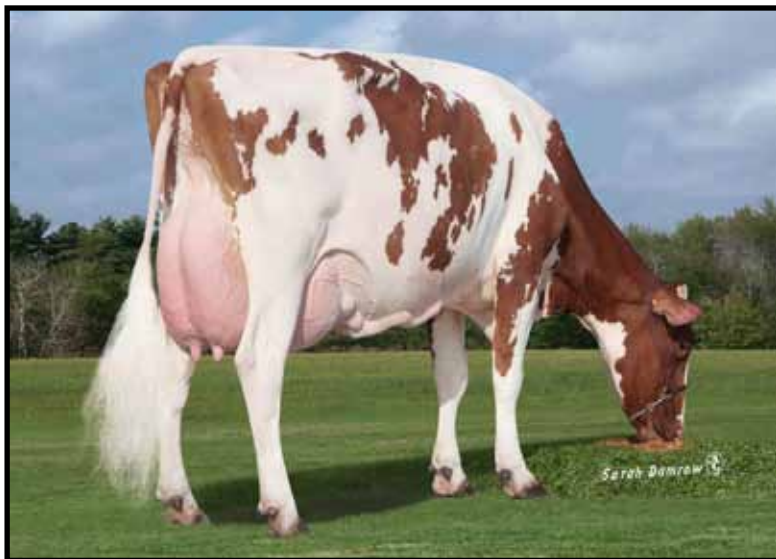
7 Oaks Dairy

MARGARET HAZELTINE
 2828 Kessler Road
 Janesville, WI 53548
 (608) 756-2913

ROB & TIFFANY HAZELTINE
 3851 Braemore St.
 Janesville, WI 53548
 Cell (608) 295-3650 • 7oaksdairy@gmail.com

VAN-DE PHOENIX CORKY ARIZONA

VERY GOOD-87



VAN-DE PHOENIX CORKY ARIZONA

89.85% AYRSHIRE 04/16/10 FEMALE
67341233 89.85%
3-07 87 ELITE P9 +600

NM\$	+634		
PTA	+2.84SCC	+3.4PL	+1.4DPR
PTA\$	+1555M	+78F	+60P
PTA\$	+634CY		8/14
PTA%	+0.09		+0.06
PTAT	+50T		51R
PPA	+3664M	+198F	+142P
CLASS	ST3	SR4	BD6
	DF8	RA5	RW4
	LS4	FA5	
	FU5	UH6	UW8
	UC4	UD4	TP5
	TL5	LR5	
DHI			%
1-10	2	305	19430
			4.6
			889
			3.4
			669
			365
			22170
			4.7
			1036
			3.5
			778
3-01	2	305	22730
			4.1
			925
			3.5
			799
			360
			24980
			4.2
			1043
			3.6
			895
4-02	PROJ		22731
			4.8
			925
			3.5
			799

#1 8/14 ELITE CPI COW
IVF & CURRENTLY FLUSHING

SON: 7 OAKS BURDETTE ALASKA AT TAURUS
#1 PTI YOUNG SIRE
#1 NET MERIT YOUNG SIRE

VAN-DE PIUHA PHOENIX

100541300 84.71%

VAN-DE ORKKO CAITLIN CORKY

100545377 95%

			6-03	92	2E	ELITE	
DHI					%	FAT	%
1-11	2	305	22970	3.9	903	3.2	729
			349	26100	3.9	1014	3.2
			834	25500	4.3	1097	3.4
			859	26990	3.9	1055	3.4
			908				

2ND JR 2-YEAR-OLD - 2010 INTERNATIONAL
NOM ALL-AMERICAN JR 2-YEAR-OLD - 2010

GRANDDAM:

S&M-AYR TRIDENT CHERRY CAITLYN

100191064 4-00 90

GOLD					%	FAT	%	PRT
1-11	2	304	18830	3.8	707	2.9	541	
2-11	2	305	18860	3.6	684	2.9	555	
			330	19630	3.6	716	3.0	
			583	21600	4.0	857	3.0	
			645	345	22290	4.0	889	
			669	20330	4.0	806	2.9	
			587	19560	3.8	734	2.8	
			540	365	21160	3.7	792	
			592	LIFE	2024	126490	3.8	
			3649				4810	
							2.9	

7 Oaks Dairy

MARGARET HAZELTINE

2828 Kessler Road
Janesville, WI 53548
(608) 756-2913

ROB & TIFFANY HAZELTINE

3851 Braemore St.
Janesville, WI 53548
Cell (608) 295-3650 • 7oaksdairy@gmail.com

HAZCROFT BURDETTE CAMILLE-ET

VERY GOOD-86



HAZCROFT BURDETTE CAMILLE-ET

97.5% AYRSHIRE 06/02/12 FEMALE
 70588371 97.5%
 2-02 86 P9 +546
 CLASS ST8 SR7 BD7 DF3 RA6 RW4 LS4 FA7
 FU5 UH6 UW6 UC7 UD7 TP6 TL4 LR7
 1-11 2 85 5886 4.2 247 3.2 186
 PROJ 19170 4.2 776 3.2 634

CURRENTLY FLUSHING

PALMYRA TRI-STAR BURDETTE-ET

100419568
 PTA +2.82SCC +1.5PL +0.6DPR
 PTA +716M +25F +27P 98R
 PTA% -.02 +.02
 PTAT +1.90T 95R 8/14
 D/AV 19538M 3.9 758F 3.2 618P 8.5T

VAN-DE ORKKO CAITLIN CORKY

100545377 95%
 6-03 92 2E ELITE
 DHI % FAT % PRT
 1-11 2 305 22970 3.9 903 3.2 729
 349 26100 3.9 1014 3.2 834
 3-01 2 305 25500 4.3 1097 3.4 859
 4-03 2 305 26990 3.9 1055 3.4 908

2ND JR 2-YEAR-OLD - 2010 INTERNATIONAL
 NOM ALL-AMERICAN JR 2-YEAR-OLD - 2010

GRANDDAM:

S&M-AYR TRIDENT CHERRY CAITLYN

100191064 4-00 90
 GOLD % FAT % PRT
 1-11 2 304 18830 3.8 707 2.9 541
 2-11 2 305 18860 3.6 684 2.9 555
 330 19630 3.6 716 3.0 583
 3-11 2 305 21600 4.0 857 3.0 645
 345 22290 4.0 889 3.0 669
 5-00 2 305 20330 4.0 806 2.9 587
 7-01 2 305 19560 3.8 734 2.8 540
 365 21160 3.7 792 2.8 592
 LIFE 2024 126490 3.8 4810 2.9 3649

7 Oaks Dairy

MARGARET HAZELTINE

2828 Kessler Road
 Janesville, WI 53548
 (608) 756-2913

ROB & TIFFANY HAZELTINE

3851 Braemore St.
 Janesville, WI 53548
 Cell (608) 295-3650 • 7oaksdairy@gmail.com

HAZCROFT REALITY CLEOPATRA-ET



HAZCROFT REALITY CLEOPATRA-ET

97.5% AYRSHIRE 06/13/13 FEMALE
 72511712 97.5%
 ELITE P9 +531

NM\$	+405			
PTA	+2.86SCC	+2.4PL	+0.4DPR	
PTA	+958M	+50F	+30P	45R
PTA\$	+405CY			8/14
PTA%		+ .07		
PTAT	+ .90T		43R	8/14

PALMYRA TRI-STAR REALITY

100369452
 PTA +2.92SCC +1.5PL
 PTA +928M +48F +18P 93R
 PTA% +.07 -.06
 PTAT +1.00T 89R 8/14
 D/AV 20575M 4.0 826F 3.1 632P 8.4T

VAN-DE ORKKO CAITLIN CORKY

100545377 95%

	6-03	92	2E	ELITE	
DHI		%	FAT	%	PRT
1-11	2	305	22970	3.9	903 3.2 729
			349	26100 3.9	1014 3.2 834
3-01	2	305	25500	4.3	1097 3.4 859
4-03	2	305	26990	3.9	1055 3.4 908

2ND JR 2-YEAR-OLD - 2010 INTERNATIONAL
 NOM ALL-AMERICAN JR 2-YEAR-OLD - 2010

GRANDDAM:

S&M-AYR TRIDENT CHERRY CAITLYN

100191064 4-00 90

GOLD		%	FAT	%	PRT
1-11	2	304	18830	3.8	707 2.9 541
2-11	2	305	18860	3.6	684 2.9 555
			330	19630 3.6	716 3.0 583
3-11	2	305	21600	4.0	857 3.0 645
			345	22290 4.0	889 3.0 669
5-00	2	305	20330	4.0	806 2.9 587
7-01	2	305	19560	3.8	734 2.8 540
			365	21160 3.7	792 2.8 592
LIFE	2024	126490	3.8	4810 2.9	3649

Couleecrest LLC

KURT PETERSON
 (608) 633-2321

SCOTT PETERSON
 (608) 769-7268

28752B Navajo Rd.
 Cashton, WI 54619
 couleecrest@hotmail.com

HAZCROFT KV CORKY CINDERELLA



HAZCROFT KV CORKY CINDERELLA

91.11% AYRSHIRE 03/02/14 FEMALE
 72511753 91.11%
 ELITE P9 +552

NM\$ +466
 PTA +2.86SCC +2.5PL +0.3DPR
 PTA +1192M +60F +47P 35R
 PTA\$ +466CY 8/14
 PTA% +.07 +.05
 PTAT +.40T 32R 8/14

CANADIAN GPA/LPI +2466

KAMOURASKA VOLVO-ET

106530705C 87.22%
 PTA +2.86SCC +1.4PL +0.1DPR
 PTA +773M +48F +34P 46R
 PTA% +.10 +.06
 PTAT +.60T 42R 8/14

VAN-DE ORKKO CAITLIN CORKY

100545377 95%
 6-03 92 2E ELITE

DHI	%	FAT	%	PRT
1-11 2 305	22970 3.9	903 3.2	729	
	349	26100 3.9	1014 3.2	834
3-01 2 305	25500 4.3	1097 3.4	859	
4-03 2 305	26990 3.9	1055 3.4	908	

2ND JR 2-YEAR-OLD - 2010 INTERNATIONAL
 NOM ALL-AMERICAN JR 2-YEAR-OLD - 2010

GRANDDAM:

S&M-AYR TRIDENT CHERRY CAITLYN

100191064 4-00 90

GOLD	%	FAT	%	PRT
1-11 2 304	18830 3.8	707 2.9	541	
2-11 2 305	18860 3.6	684 2.9	555	
	330	19630 3.6	716 3.0	583
3-11 2 305	21600 4.0	857 3.0	645	
	345	22290 4.0	889 3.0	669
5-00 2 305	20330 4.0	806 2.9	587	
7-01 2 305	19560 3.8	734 2.8	540	
	365	21160 3.7	792 2.8	592
LIFE 2024	126490 3.8	4810 2.9	3649	

7 Oaks Dairy

MARGARET HAZELTINE

2828 Kessler Road
 Janesville, WI 53548
 (608) 756-2913

ROB & TIFFANY HAZELTINE

3851 Braemore St.
 Janesville, WI 53548
 Cell (608) 295-3650 • 7oaksdairy@gmail.com

VAN-DE ORKKO CRICKET CROQUET

VERY GOOD-85



VAN-DE ORKKO CRICKET CROQUET

89.43% AYRSHIRE 11/29/08 FEMALE 89.43%
 100558304 4-05 85 ELITE P9 +589

NM\$ +660
 PTA +2.79SCC +5.0PL +1.7DPR
 PTA +1331M +59F +62P 61R
 PTA\$ +660CY 8/14
 PTA% +.04 +.10
 PTAT +.50T 57R 8/14
 PPA +3447M +151F +150P

CLASS ST9 SR6 BD8 DF6 RA5 RW5 LS6 FA6
 FU7 UH9 UW7 UC9 UD7 TP6 TL5 LR7

DHI % FAT % PRT
 2-07 2 305 21190 4.5 963 3.8 797
 314 21610 4.6 986 3.8 815
 3-10 2 305 22470 4.0 905 3.4 764
 5-05 2 107 11491 3.5 404 3.1 356
 PROJ 22896 832 743

 #1 NET MERIT COW, 8/14
 #2 ELITE CPI COW, 8/14

SON: HAZCROFT PERFECT CANNON
 GOING TO SELECT SIRE

PUROLAN ORKKO FI

41531C 90%
 PTA +2.75SCC +4.8PL +2.1DPR
 PTA +1016M +32F +49P 98R
 PTA% -.04 +.09
 PTAT -.30T 85R 8/14
 D/AV 22895M 3.9 882F 3.2 737P 8.3T

VAN-DE JERRY K-T-DID CRICKET

100430983 7-01 92 3E 88.87%

DHI	%	FAT	%	PRT
1-09 2 305	19630	3.7	726	3.2 627
	365	23330	3.8	881 3.2 755
3-02 2 305	21650	4.1	891	3.3 713
	326	22710	4.2	943 3.3 753
4-02 2 305	22350	3.9	875	3.4 764
	311	22660	3.9	889 3.4 775
5-02 2 341	28640	4.1	1176	3.4 984
6-03 2 305	24520	3.7	905	3.5 848
LIFE	1943	134520	4.0	5372 3.4 4582

GRANDDAM:

VAN-DE TBRUNO CANDIDA K-T-DID

100430956 5-05 86 77.75%

DHI	%	FAT	%	PRT
1-10 2 321	18220	4.1	748	3.3 596
2-11 2 310	18070	4.3	775	3.4 606
3-10 2 365	18610	4.1	763	3.4 630
5-02 2 319	20850	4.3	902	3.4 712
6-02 2 297	16580	4.0	655	3.4 557

7 Oaks Dairy

MARGARET HAZELTINE

2828 Kessler Road
 Janesville, WI 53548
 (608) 756-2913

ROB & TIFFANY HAZELTINE

3851 Braemore St.
 Janesville, WI 53548
 Cell (608) 295-3650 • 7oaksdairy@gmail.com

PLUM-BOTTOM LENNON ANTOINETTE VERY GOOD-85



PLUM-BOTTOM LENNON ANTOINETTE, POLLED

PUREBRED AYRSHIRE 05/27/10 FEMALE
100598450

4-00 85 P- +395

NM\$	-151							
PTA	+3.20	SCC	-3.1	PL	-0.4	DPR		
PTA	-47M		-1F		+5P		45R	
PTA\$	-151	CY					8/14	
PTA%					+0.03			
PTAT	+0.10	T			49R		8/14	
PPA	+253M		+18F		+27P			
CLASS	ST6	SR5	BD6	DF6	RA4	RW5	LS4	FA7
	FU4	UH6	UW4	UC7	UD6	TP6	TL2	LR7
DHI								
	2-09	2	305	12000	4.4	525	3.5	422
			316	12240	4.4	537	3.5	432

SON: PLUM-BOTTOM PLUTO ALFIE (POLLED)
GENOMIC TESTED

DAUGHTER: PLUM-BOTTOM PLUTO ATHENA
1ST SPRING CALF & HM JR CHAMPION,
2013 HUNTINGTON CO FAIR
SELECTED FOR 2015 GRAND NATIONAL SALE

PLUM-BOTTOM REWARD LENNON, POLLED

100065385

PTA +3.13 SCC -5.0 PL -0.5 DPR
PTA -84M +2F +12P 85R
8/14

PTA% +0.03 +0.08
PTAT -.20T 73R 8/14
D/AV 17483M 3.8 672F 3.2 567P 8.2T

PLUM-BOTTOM PARAGON'S AIDA

100325375 10-02 90 2E

DHI			%	FAT	%	PRT
4-09	2	343	14240	4.0	564	3.2 461
5-11	2	270	12390	4.8	598	3.1 384
6-10	2	333	11050	2.5	279	2.9 319
7-11	2	337	12100	4.1	498	3.2 393
9-00	2	346	12600	3.9	492	3.3 420
10-00	2	305	12770	3.9	495	3.2 412
		307	12830	3.9	499	3.2 414

OVER 75,000 IN 6 LACTS (3 QUARTERS)
RECORDS PRODUCED ON ROTATIONAL GRAZING

GRANDDAM: PLUM-BOTTOM LOT'S APRICOT

100320352 7-02 88

DHI			%	FAT	%	PRT
3-00	2	307	12150	4.3	521	3.6 434
4-00	2	268	13620	3.8	515	3.3 447
4-11	2	243	12960	3.6	473	3.0 388
5-09	2	241	9840	4.1	400	3.4 333
6-10	2	272	14110	3.5	497	3.1 439
7-10	2	332	16570	3.5	585	3.3 548
9-01	2	267	13190	3.8	499	3.2 428
LIFE		2064	100150	3.8	3761	3.3 3262

Plum Bottom Ayrshires

AUDREY GAY RODGERS

6364 SR 655, Belleville, PA 17004

(717) 677-3731 • www.hameaufarm.com

hameau@embarqmail.com

EMERALD-FARMS POKERS SWEETHING VERY GOOD-87



EMERALD-FARMS POKERS SWEETHING

PUREBRED AYRSHIRE 10/03/11 FEMALE
100631647 2-08 87 P8 +480

NM\$ +169
PTA +2.99SCC +0.4PL -0.3DPR
PTA +554M +27F +16P 48R
PTA\$ +169CY 8/14
PTA% +.03 -.01
PTAT +.90T 46R 8/14
PPA +2213M +124F +72P

CLASS ST6 SR4 BD6 DF6 RA5 RW7 LS5 FA6
FU6 UH6 UW6 UC6 UD7 TP6 TL3 LR8
1-11 2 305 15080 4.7 712 3.3 495
ME 19000 862 599

1ST FALL CALF - 2012 CENTRAL NATIONAL JR
3RD FALL CALF - 2012 SOUTHERN NATIONAL JR
NOM JR ALL-AMERICAN FALL CALF - 2012
3RD FALL YEARLING IN MILK - 2013 CENTRAL
NAT'L JR
2RD FALL YEARLING IN MILK - 2013 SOUTHERN
NAT'L JR
2ND FALL YEARLING IN MILK - 2013 SOUTHERN
NATIONAL
NOM JR ALL-AMERICAN FALL YEARLING IN MILK
- 2013
1ST - 2014 OH STATE FAIR FUTURITY
RES GRAND - 2014 OH STATE FAIR
GRAND CHAMPION - OH STATE FAIR JR SHOW

DUE 4/5/15 TO
PALMYRA TRISTAR BURDETTE-ET

DES CHAMOIS POKER-ET

8401621C
PTA +2.84SCC +1.6PL -0.9DPR
PTA +318M +25F +7P 98R
PTA% +.07 -.02
PTAT +.60T 96R 8/14
D/AV 19609M 3.9 773F 3.1 615P 8.4T

EMERALD-FARMS KELLYBUCK SWEET

100570252

GOLD			%	FAT	%	PRT
2-06	2	301	13960	3.6	509	3.0 416
3-05	2	221	9950	3.5	348	3.2 323

3RD SPRING YRLG - 2010 CENTRAL NATIONAL JR
1ST SPRING YRLG - 2010 SOUTHERN NATIONAL JR
HM JR ALL-AMERICAN SPRING YEARLING - 2010
1ST JR 3 - 2012 SOUTHERN NATIONAL JR
NOM JR ALL-AMERICAN JR 3 - 2012

GRANDDAM:

EMERALD-FARMS ESPECIALLY SWEET

100339189 3-11 87

GOLD			%	FAT	%	PRT
2-02	2	365	13590	4.5	607	3.2 435
3-09	2	327	16080	4.5	725	3.2 507
4-10	2	341	17190	4.3	742	3.2 544
6-02	2	314	15670	4.3	671	3.1 492
7-02	2	308	15760	3.9	612	3.1 484
LIFE	2065	100710	4.4	4407	3.2	3203

UNAN JR ALL-AMERICAN AGED COW - 2011

Emerald Farms
THE FENTON & JODREY FAMILIES
22050 SR 136, Winchester, OH 45697
(937) 695-0697

Doug: (937) 205-1209
Tom: (937) 217-0287

Ron: (937) 725-5333
Joann: (937) 217-0697

SUNNY-ACRES CC LOLA

VERY GOOD-85



SUNNY-ACRES CC LOLA

PUREBRED AYRSHIRE 09/01/10 FEMALE
 100604966
 2-10 85 P- +371
 NM\$ +98
 PTA +2.92SCC +3.4PL +0.9DPR
 PTA -428M -17F -17P 49R
 PTA\$ +98CY 8/14
 PTA% -.02
 PTAT +.40T 50R 8/14
 PPA -568M -20F -23P
 CLASS ST5 SR5 BD6 DF6 RA5 RW7 LS4 FA3
 FU6 UH7 UW5 UC7 UD7 TP5 TL3 LR7
 GOLD % FAT % PRT
 2-03 2 305 18820 4.4 826 3.2 598
 365 21690 4.4 960 3.2 699
 3-06 2 197 18005 4.2 758 3.4 612
 RIP
 PROJ 23468 4.5 1063 3.0 689

1ST & BEST UDDER SR 3-YEAR-OLD, 2014 IA
 STATE FAIR
 RES INTERMEDIATE CHAMPION, 2014 IA STATE
 FAIR
 BRED 9/1/14 TO NEXUS DREAMER

CEDARVALE CHARLESTON

100193589
 PTA +2.85SCC +2.1PL +0.4DPR
 PTA -41M -13F -6P 80R
 PTA% -.05 -.03
 PTAT +.60T 62R 8/14
 D/AV 20144M 3.7 752F 3.1 632P

SUNNY-ACRES JERICO'S LAYLA

100470057 7-07 93 3E
 GOLD % FAT % PRT
 1-11 2 365 20720 4.2 867 3.3 684
 3-02 2 281 19580 3.9 763 3.3 643
 4-00 2 350 24480 4.2 1023 3.2 783
 5-01 2 296 21850 3.8 835 3.0 661
 6-01 2 342 28170 4.2 1194 3.0 857
 LIFE 1660 115710 4.1 4734 3.2 3661

GRANDDAM: SUNNY-ACRES PROLY LINEN

100228780 6-01 93 2E
 GOLD % FAT % PRT
 2-04 2 305 19390 3.8 742 2.9 568
 365 22070 3.8 845 3.0 664
 3-08 2 305 23080 3.6 823 3.0 690
 362 25130 3.5 889 3.0 756
 4-11 2 303 21420 3.5 758 3.2 686
 5-11 2 305 19930 3.2 641 3.2 645
 365 21680 3.3 708 3.3 707
 7-01 2 305 20930 3.6 757 3.0 630
 LIFE 2049 128390 3.6 4602 3.1 4026

2ND 4-YEAR-OLD - 2005 MID-ATLANTIC NATIONAL

Now-Ayr Farms

ERIC LANG
 Brooklyn, IA
 (641) 990-6977

Steinridge

JASON STEINLAGE
 Lawler, IA
 (379) 596-5663

steinridgejerseys@hotmail.com

DALTONDALE CAPTAIN ROSID-ET

EXCELLENT-92



DALTONDALE CAPTAIN ROSID-ET

PUREBRED AYRSHIRE 12/06/09 FEMALE
 100580624 4-07 92 P5 +432
 NM\$ +166
 PTA +2.94SCC +2.6PL
 PTA -62M +8F +0P 53R
 PTA\$ +166CY 8/14
 PTA%
 PTAT +.60T +.06 +.01 42R 8/14
 PPA +759M +60F +28P
 CLASS ST9 SR6 BD8 DF8 RA5 RW8 LS6 FA5
 FU5 UH7 UW8 UC6 UD6 TP7 TL5 LR6
 GOLD % FAT % PRT
 2-05 2 305 15740 4.2 668 3.3 521
 322 16530 4.3 705 3.3 549
 3-05 2 305 22520 4.1 933 3.1 705
 337 24010 4.2 997 3.2 759

NOM ALL-AMERICAN WINTER YEARLING - 2011
 NOM ALL-AMERICAN SR 3-YEAR-OLD - 2013
 2ND 4-YEAR-OLD, 2014 IA STATE FAIR
 HM SR CHAMPION, 2014 IA STATE FAIR

AYR BAY CAPTAIN

7510475C
 PTA +2.79SCC +2.7PL -1.1DPR
 PTA +74M +12F -6P 91R
 PTA% +.05 -.04
 PTAT +.10T 83R 8/14
 D/AV 17567M 3.9 687F 3.0 533P 8.3T

DALTONDALE BBK ROSIE

100274585 3-04 87
 DHI % FAT % PRT
 2-02 2 284 11520 4.2 484 3.5 398
 3-02 2 333 14050 4.2 588 3.5 490
 4-02 2 346 17750 4.0 712 3.4 607
 5-04 2 305 18040 3.7 673 3.1 567

2ND SUMMER YRLG - 2003 CENTRAL NATIONAL
 1ST SUMMER YRLG - 2003 CENTRAL NATIONAL JR
 HON MEN ALL-AMERICAN SUMMER YRLG - 2003
 RES JR ALL-AMERICAN SUMMER YRLG - 2003

GRANDDM: DALTONDALE KELL'S REALITY

100191121 6-01 86
 DHI % FAT % PRT
 3-00 2 282 12350 3.7 462 3.2 390
 3-11 2 275 12520 3.5 444 3.1 393
 5-00 2 299 12670 3.7 469 3.1 394

2ND SUMMER YRLG-2001 CENTRAL NATIONAL JR
 2ND SUMMER YRLG-2001 SOUTHERN NAT'L JR
 NOM ALL-AMERICAN SUMMER YRLG - 2001
 RES JR ALL-AMERICAN SUMMER YRLG - 2001
 2ND JR 2-YEAR-OLD - 2002 CENTRAL NATIONAL JR
 NOM JR ALL-AMERICAN JR 2-YEAR-OLD - 2002
 2ND JR 3-YEAR-OLD - 2003 CENTRAL NATIONAL JR
 NOM JR ALL-AMERICAN JR 3-YEAR-OLD - 2003

Bear-Ayr Farm
 DONNA, CASEY & HALEY MERTZ
 1390 County Road P18
 Blair, NE 68008
 (920) 382-7678
 hansendvm@hotmail.com

HAWKSFIELD SONG BIRD

EXCELLENT-92



HAWKSFIELD SONG BIRD

PUREBRED AYRSHIRE 09/02/08 FEMALE
100561377

4-03 92 P6 +464

NM\$	+321							
PTA	+2.70SCC	+4.1PL	+1.3DPR					
PTA	+425M	+7F	+11P	54R				
PTA\$	+321CY			8/14				
PTA%		-.05	-.01					
PTAT	+.90T		55R	8/14				
PPA	+2071M	+49F	+65P					
CLASS	ST7	SR7	BD7	DF8	RA6	RW6	LS6	FA7
	FU7	UH7	UW8	UC6	UD6	TP6	TL3	LR8
DHI				%	FAT	%	PRT	
2-09	2	305	14240	3.5	493	3.0	433	
		365	16285	3.5	574	3.2	568	
4-00	2	305	20350	3.3	673	3.1	633	
		365	24324	3.5	843	3.1	764	
6-08	AVG OVER 100 LBS/DAY AT 90 DAYS							
LIFE	1080	52870	3.8	2002	3.3	1735		

3RD SR 3-YEAR-OLD - 2012 SOUTHERN NATIONAL

8TH GENERATION EXCELLENT

BLACK BRONARA'S SHOW PLACINGS:

1ST SUMMER YEARLING - 2006 SOUTHERN NATIONAL
 NOM ALL-AMERICAN SUMMER YEARLING - 2006
 HM ALL-AMERICAN JR 2-YEAR-OLD - 2007
 NOM ALL-AMERICAN JR 3-YEAR-OLD - 2008
 2ND 5-YEAR-OLD - 2010 INTERNATIONAL
 HM ALL-AMERICAN 5-YEAR-OLD - 2010
 3RD 100,000 LB COW - 2013 SOUTHERN NATIONAL
 NOM ALL-AMERICAN 100,000 LB COW - 2013

MAPLE-DELL AVENGER SARGE-ET

100378412

PTA	+2.58SCC	+3.8PL	+1.4DPR					
PTA	-217M	+2F	-6P	92R				
PTA%		+1.06						
PTAT	+.90T		85R	8/14				
D/AV	17555M	3.9	687F	3.1	551P	8.5T		

HAWKSFIELD BLACK BRONARA-ET

100433632 5-04 93

DHI				%	FAT	%	PRT	
2-00	2	305	18278	3.9	714	3.4	616	
		365	21748	3.9	849	3.4	748	
3-02	2	305	19160	4.7	895	3.3	639	
		365	23297	4.6	1070	3.4	783	
4-09	2	305	24920	3.9	963	3.3	814	
		365	28335	4.1	1154	3.3	942	
6-00	2	305	17260	3.1	537	3.3	569	
		365	19431	3.2	616	3.3	639	
LIFE	2078	128631	4.0	5192	3.3	4278		

GRANDDAM: HAWKSFIELD BRONARA-ET

1003063 12-02 94 4E

DHI				%	FAT	%	PRT	
2-05	2	285	17409	3.6	626	3.3	575	
3-03	2	305	17429	5.4	942	3.8	655	
		365	20774	5.4	1117	3.8	781	
4-03	2	305	21070	4.6	977	3.6	748	
		365	25511	4.6	1163	3.7	932	
6-04	2	305	22290	4.7	1040	3.0	674	
		341	24660	4.5	1122	3.0	737	
7-03	2	305	26030	3.5	908	3.0	789	
LIFE	5787	352302	4.3	15073	3.4	1182		

NOM ALL-AMERICAN AGED COW - 2001

Hawksfield Farm
CHARLES SAYLES
 150 E. Braden Road
 Perry, MI 48872-9545
 (517) 290-6627
 ayrhawk2@gmail.com

VALES-PRIDE REALITY ODEILIA

VERY GOOD-87



VALES-PRIDE REALITY ODEILIA

PUREBRED AYRSHIRE 03/04/11 FEMALE
100608214

3-03 87 ELITE P9 +515

NM\$ +391
PTA +2.81SCC +2.8PFL +0.7DPR
PTA +1003M +48F +22P 55R
PTA\$ +391CY 8/14
PTA%
PTAT +1.00T 61R 8/14
PPA +2768M +143F +60P
CLASS ST8 SR3 BD6 DF9 RA5 RW5 LS6 FA5
FU4 UH7 UW8 UC9 UD6 TP5 TL7 LR8
GOLD % FAT % PRT
2-00 2 305 21090 4.9 1028 2.9 604
338 22590 4.9 1115 2.9 663
3-02 PROJ 22467 1116 664

2ND SPRING CALF - 2011 MID-ATLANTIC NAT'L JR
2ND SPRING CALF - 2011 CENTRAL NATIONAL JR
NOM ALL-AMERICAN SPRING CALF - 2011
NOM JR ALL-AMERICAN SPRING CALF - 2011
2ND SPRING YRLG - 2012 MID-ATLANTIC NAT'L JR
3RD SPRING YRLG - 2012 MID-ATLANTIC NAT'L JR
1ST SPRING YRLG - 2012 CENTRAL NAT'L JR
RES JR CHAMPION - 2012 CENTRAL NATIONAL JR
NOM ALL-AMERICAN SPRING YEARLING - 2012
RES JR ALL-AMERICAN SPRING YEARLING - 2012
2ND JR 2 - 2013 MID-ATLANTIC NATIONAL JR
2ND JR 3 - 2014 MID-ATLANTIC NATIONAL JR

#76 8/14 ELITE CPI LIST

PALMYRA TRI-STAR REALITY

100369452

PTA +2.92SCC +1.5PFL
PTA +928M +48F +18P 93R
PTA% +.07 -.06
PTAT +1.00T 89R 8/14
D/AV 20575M 4.0 826F 3.1 632P 8.4T

VALES-PRIDE EXTREME ODYSSEY

100416967 5-06 86

GOLD			%	FAT	%	PRT
2-01	2	305	19350	4.9	939	3.1 607
			365	22720	4.9	1116 3.2 721
3-03	2	305	16300	4.7	767	3.3 540
			365	18770	4.7	886 3.4 630
4-06	2	305	19980	5.3	1062	3.2 635
			330	20920	5.3	1111 3.2 668
5-06	2	288	17350	4.5	784	3.0 529
6-06	2	272	20580	4.2	867	2.7 555
7-04	2	305	20320	4.7	945	2.7 553
			309	20500	4.6	953 2.7 559
LIFE	2075	129860	4.8	6175	3.0	3960

GRANDDAM: VALES-PRIDE KELLY ONEIDA

100164468 5-06 84

GOLD			%	FAT	%	PRT
2-10	2	305	16620	4.9	819	3.2 540
			351	18530	5.0	922 3.3 606
3-11	2	305	16540	4.8	798	3.3 539
			317	16950	4.8	817 3.3 553
5-01	2	277	17040	5.6	958	3.0 514

Vales-Pride Farm

THE VALENTINE FAMILIES

16901 Bollinger School Rd., Emmitsburg, MD 21727

Amanda Cell (301) 447-3846

Mark Cell (240) 674-6092

ayrshireluvr@netzero.com

BLUE-SPRUCE BALTIMORE 9822

EXCELLENT-91



BLUE-SPRUCE BALTIMORE 9822

PUREBRED AYRSHIRE 03/01/11 FEMALE
840003006538230
3-04 91 P- +430

NM\$	+92							
PTA	+2.99SCC	+1.6PL	+0.2DPR					
PTA	-95M	+5F	+1P	49R				
PTA\$	+92CY			8/14				
PTA%	+0.05			+0.02				
PTAT	+1.00T		48R	8/14				
PPA	-442M	+35F	-7P					
CLASS	ST9	SR5	BD7	DF9	RA5	RW6	LS6	FA5
	FU5	UH8	UW6	UC9	UD6	TP8	TL5	LR7
	2-03	2	296	16453	4.4	726	3.4	562
	3-03	2	95	7363	4.0	296	3.1	225
								RIP

1ST SPRING YEARLING - 2012 EASTERN STATES NATIONAL
NOM ALL-AMERICAN SPRING YEARLING - 2012
2ND JR 3-YEAR-OLD - 2014 EASTERN STATES NATIONAL
RES INTERMEDIATE CHAMPION - 2014 EASTERN STATES NAT'L

6/14 DAUGHTERS BY CALIMERO
IVF PREGNANCIES BY PRIME & NEMO

PALMYRA PARDNER BALTIMORE-ET

100279731
PTA +3.06SCC +1.6PL -0.3DPR
PTA -70M +3F +2P 95R
PTA% +0.03 +0.02
PTAT +.60T 87R 8/14
D/AV 18716M 3.9 729F 3.2 592P 8.4T

BLUE-SPRUCE REMINGTON 8179

840003004041639 4-05 91
DHI % FAT % PRT
3-04 2 298 21050 3.8 796 3.5 729

GRANDDAM: SCAPELAND RESTLESS BRIDGET

100478699 4-08 86
DHI % FAT % PRT
2-03 2 305 17440 3.8 671 3.1 532
351 19380 3.9 756 3.1 599
3-04 2 300 16320 4.0 660 2.9 471
4-03 2 305 24420 3.8 928 3.1 745
309 24650 3.8 935 3.1 752
5-03 2 305 23780 3.5 844 3.0 725

NEXT FOUR DAMS:
VG-87, VG-85, VG-85, VG-85

Blue-Spruce Farm
EUGENE & NATHAN AUDET

1796 VT RTE 22A
Bridport VT 05734

(802-758-2179) • Nathan cell: (802-989-0649) • Eugene home: (802-753-2359)

Email: bsf@gmavt.net

GOOD-VUE POKERS ROXI EXCELLENT-90



GOOD-VUE POKERS ROXI

PUREBRED AYRSHIRE 07/26/09 FEMALE
 840003000764066
 4-00 90 P9 +479

NM\$ +242
 PTA +2.75SCC +1.7PL -0.8DPR
 PTA +652M +26F +13P 51R
 PTA\$ +242CY 8/14
 PTA% -.04
 PTAT +.60T 55R 8/14
 PPA +1295M +75F +30P

CLASS ST5 SR4 BD5 DF5 RA3 RW6 LS5 FA6
 FUS UH6 UW6 UC6 UD6 TP6 TL3 LR7

GOLD % FAT % PRT
 2-00 2 305 14650 3.7 544 3.1 460
 365 17292 3.7 639 3.2 553
 3-07 2 305 22330 3.5 784 3.0 666
 331 23080 3.5 812 3.0 695

 1ST SUMMER YEARLING - 2010 CENTRAL NAT'L JR
 RES JR ALL-AMERICAN SUMMER YEARLING - 2010
 3RD JR 2-YEAR-OLD - 2011 CENTRAL NATIONAL JR
 1ST 4-YEAR-OLD - 2013 CENTRAL NATIONAL JR
 RES JR ALL-AMERICAN 4-YEAR-OLD - 2013
 RES GRAND CHAMPION - 2014 MN STATE FAIR

FRESH 7/3/14

DES CHAMOIS POKER-ET

8401621C
 PTA +2.84SCC +1.6PL -0.9DPR
 PTA +318M +25F +7P 98R
 PTA% +.07 -.02
 PTAT +.60T 96R 8/14
 D/AV 19609M 3.9 773F 3.1 615P 8.4T

GOOD-VUE LORENZOS REDRESS

100295526 4-04 88

GOLD	%	FAT	%	PRT
2-03 2 305	16050	3.8	610	2.9 470
	307	16120	3.8	613 2.9 472
3-03 2 304	18300	3.6	650	3.1 575
4-03 2 305	20010	3.3	662	3.1 617
	356	22270	3.4	752 3.1 694
5-04 2 295	19960	3.4	684	3.2 635

GRANDDAM: GOOD-VUE RENOS RUBY

100154872

GOLD	%	FAT	%	PRT
4-03 2 295	20020	3.6	728	3.1 617

Good-Vue Ayr Farms

MICHAEL & LINDA HANSON, DAVID, MATTHEW & STEVEN

35400 St. Hwy 1 NE, Goodridge, MN 56725

(218) 378-4588

miliha@gvtel.com

GOOD-VUE POKERS GLIMMER EXCELLENT-91



GOOD-VUE POKERS GLIMMER

PUREBRED AYRSHIRE 06/18/08 FEMALE
840003000764036
5-10 91 P5 +425

NM\$ +209
PTA +2.81SCC +2.0PL +0.2DPR
PTA +139M +20F +2P 54R
PTA\$ +209CY 8/14
PTA% +.08 -.01
PTAT +.20T 48R 8/14
PPA +51M +72F +8P

CLASS ST6 SR5 BD7 DF6 RA4 RW7 LS5 FA4
FU6 UH8 UW8 UC7 UD5 TP7 TL2 LR8

GOLD			%	FAT	%	PRT
2-02	2	305	15440	4.0	618	3.0 460
		308	15559	4.0	623	3.0 463
3-02	259	10673	4.2	451	3.6 383	
4-01	2	305	19850	4.0	797	3.2 641
		317	20490	4.0	825	3.2 662
5-01	2	284	18810	4.0	747	3.4 635

1ST SUMMER YEARLING - 2009 INTERNATIONAL JR
NOM ALL-AMERICAN SUMMER YEARLING - 2009
JR ALL-AMERICAN SUMMER YEARLING - 2009
GRAND CHAMPION - 2014 MN STATE FAIR

FRESH 7/6/14 AT 6-00 WITH FIFTH CALF

DES CHAMOIS POKER-ET

8401621C
PTA +2.84SCC +1.6PL -0.9DPR
PTA +318M +25F +7P 98R
PTA% +.07 -.02
PTAT +.60T 96R 8/14
D/AV 19609M 3.9 773F 3.1 615P 8.4T

GOOD-VUE TRI-STAR GLORY

100425543 3-02 81
GOLD % FAT % PRT
2-08 2 305 17290 3.7 639 3.1 544
359 19480 3.7 719 3.2 623

GRANDDAM: GOOD-VUE GABY'S GLENIS

1004662 5-04 90
GOLD % FAT % PRT
2-08 2 305 17680 4.4 772 3.3 580
330 18830 4.3 819 3.3 621
3-09 2 272 18600 4.5 835 3.4 634
4-09 2 305 21310 3.9 828 3.2 692
337 22540 3.9 875 3.3 736
5-11 2 305 19450 3.8 738 3.1 594
365 22450 3.8 861 3.1 706
7-04 2 305 20100 3.8 757 3.2 637
8-05 2 305 18150 3.4 620 3.2 577
318 18610 3.4 639 3.2 594
9-05 2 305 19740 3.5 694 3.1 604
LIFE 2875 170860 3.9 6651 3.2 5521

Good-Vue Ayr Farms

MICHAEL & LINDA HANSON, DAVID, MATTHEW & STEVEN

35400 St. Hwy 1 NE, Goodridge, MN 56725

(218) 378-4588

miliha@gvtel.com

MAINSTREAM REAL BETHANY

EXCELLENT-92



MAINSTREAM REAL BETHANY

PUREBRED AYRSHIRE 03/09/10 FEMALE
 100588190
 4-06 92 P9 +495
 NM\$ +336 NATIONAL CLASS LEADER
 PTA +2.88SCC +2.9PL -0.1DPR
 PTA +713M +44F +14P 51R
 PTA\$ +336CY 8/14
 PTA%
 PTAT +.90T +.09 -.05 42R 8/14
 PPA +1884M +151F +35P
 CLASS ST7 SR6 BD6 DF7 RA5 RW7 LS5 FA5
 FU7 UH8 UW6 UC5 UD5 TP9 TL5 LR8
 GOLD % FAT % PRT
 2-02 2 305 22900 5.0 1137 2.9 673
 335 24450 5.0 1229 3.0 723
 3-03 2 305 31990 4.7 1510 3.1 978
 365 37870 4.7 1777 3.1 1173

FRESH 8/11/14 127 LBS 1ST TEST
 6/13 BURDETTE DAUGHTER - PPTI 511

MATERNAL SISTER:
 MAINSTREAM BURDETTE BACARDI
 VG-88 @ 2-05

PALMYRA TRI-STAR REALITY

100369452
 PTA +2.92SCC +1.5PL
 PTA +928M +48F +18P 93R
 PTA% +.07 -.06
 PTAT +1.00T 89R 8/14
 D/AV 20575M 4.0 826F 3.1 632P 8.4T

BIRGHDALE COUNTESS 111

100546181 6-07 89
 GOLD % FAT % PRT
 2-00 2 305 24970 4.7 1180 3.2 794
 342 27280 4.9 1336 3.2 872
 3-01 2 305 25930 5.1 1314 3.3 867
 337 27240 5.0 1373 3.4 917
 4-01 2 305 27880 4.0 1107 3.2 879
 361 30600 4.0 1210 3.2 972
 5-07 2 305 31640 3.6 1130 3.0 941
 LIFE 1345 116760 4.3 5049 3.2 3702

Mainstream Ayrshires

MARK KORTUS

2350 Main St.

Lynden WA 98264

(360-354-5266)

Email: mainstrm1@hotmail.com

S&M-AYR HERMAN'S MARIE

EXCELLENT-91



S&M-AYR HERMAN'S MARIE

PUREBRED AYRSHIRE 03/09/09 FEMALE
100563061

3-11 91 P9 +499

NM\$ +167
PTA +2.75SCC -0.9PL -1.2DPR
PTA +1255M +43F +22P 53R
PTA\$ +167CY 8/14
PTA% -.03 -.09
PTAT +.80T 54R 8/14
PPA +3257M +116F +55P
CLASS ST9 SR8 BD8 DF7 RA5 RW7 LS5 FA6
FU8 UH8 UW8 UC6 UD7 TP5 TL7 LR7
DHI % FAT % PRT
2-08 2 305 19990 4.0 801 2.9 575
355 22120 4.0 894 2.9 638
3-09 2 305 20480 3.6 735 2.8 572
5-02 2 92 7626 3.9 301 2.6 197
RIP
PROJ 20285 3.6 737 2.7 558

1ST JR 3 - 2012 MID-ATLANTIC NATIONAL JR
HM INT CHAMPION - 2012 MID-ATLANTIC NATIONAL JR
RES JR ALL-AMERICAN JR 3-YEAR-OLD - 2012
3RD 4-YEAR-OLD - 2013 MID-ATLANTIC NATIONAL JR
GRAND & RES SUPREME CHAMPION - 2013 & 2014
SOUTH MOUNTAIN FAIR
GRAND CHAMPION - 2014 YORK FAIR
3RD 5-YEAR-OLD - 2014 MID-ATLANTIC NATIONAL

MARIE'S DAUGHTER:
BARREN'S VIEW TSB MARGARITA, VG-87
#26 8/14 ELITE CPI COW

VISSERDALE HERMAN

100115017

PTA +2.68SCC -3.1PL -1.2DPR
PTA +1060M +29F +19P 96R
PTA% -.07 -.07
PTAT +.10T 91R 8/14
D/AV 19878M 3.8 755F 3.1 608P 8.3T

S&M-AYR PLUTO'S MAMIE

100479319

4-00 84
GOLD % FAT % PRT
2-03 2 305 12190 4.3 522 3.0 360
3-07 2 305 18750 4.1 770 3.0 563
362 20750 4.1 852 3.0 628
4-09 2 305 18980 4.0 754 3.0 563
361 20600 4.0 815 3.0 617
5-11 2 305 18560 4.1 758 2.9 539

GRANDDAM:

S&M-AYR JASON'S MARTHA 2ND

100224852

8-05 87
GOLD % FAT % PRT
2-11 2 305 13950 4.1 566 3.0 416
4-01 2 305 15330 4.1 629 3.0 467
5-06 2 305 23060 3.8 873 2.7 629
6-09 2 305 22530 3.8 854 2.9 649
8-01 2 305 19560 3.6 713 2.8 556
344 20940 3.6 764 2.9 602
9-02 2 305 17270 3.7 636 3.1 530
340 18720 3.7 687 3.1 577
10-03 2 224 11350 3.9 438 2.9 334
LIFE 2525 139010 3.9 5382 3.0 4133

Barrens View Farm
THE BAUMGARDNER FAMILY

237 W Barrens Church Rd
Dillsburg PA 17019

Dan (717) 432-3169 • Justin (717) 357-2524 • Nathan (717) 357-2563

E-mail: wildcowz@hughes.net

BARRENS-VIEW BURDETTE LYZA



BARRENS-VIEW BURDETTE LYZA

PUREBRED AYRSHIRE 01/13/12 FEMALE
71088372

P6 +462
2-05 2 69 3980 3.7 139 2.6 105
PROJ 16079 3.7 589 2.8 531

JR CHAMPION - 2013 SOUTH MOUNTAIN
FAIR
1ST SR 2 & RES GRAND CHAMPION - 2014
SOUTH MOUNTAIN FAIR
4TH SR 2 - 2014 MID-ATLANTIC NATIONAL

HAS 6/21/14 **POLLED** LENNON DAUGHTER

PALMYRA TRI-STAR BURDETTE-ET

100419568
PTA +2.82SCC +1.5PL +0.6DPR
PTA +716M +25F +27P 98R
PTA% -.02 +.02
PTAT +1.90T 95R 8/14
D/AV 19538M 3.9 758F 3.2 618P 8.5T

BARRENS-VIEW LARO'S LYTNING, **POLLED**

100480661 4-03 90
DHI % FAT % PRT
1-10 2 305 10940 3.6 396 3.1 342
361 12460 3.7 461 3.2 394
3-00 2 305 16920 3.8 642 3.1 528
324 17310 3.8 659 3.1 542
4-00 2 298 18870 3.2 602 3.0 567
5-00 2 283 16240 3.2 518 2.9 477

GRANDDAM: CONEBELLA COPPER'S LYSHIA

100392326 3-04 82
DHI % FAT % PRT
2-00 2 305 15020 3.8 564 3.0 453
343 16460 3.8 622 3.0 502
3-01 2 301 14680 3.6 532 3.0 443
4-02 2 269 16450 3.3 550 2.9 480

Barrens View Farm
THE BAUMGARDNER FAMILY

237 W Barrens Church Rd
Dillsburg PA 17019

Dan (717) 432-3169 • Justin (717) 357-2524 • Nathan (717) 357-2563

E-mail: wildcowz@hughes.net

SUNRISE-RIDGE FARAH

EXCELLENT-92 2E



SUNRISE-RIDGE FARAH

PUREBRED AYRSHIRE 06/23/07 FEMALE
 100509908
 5-07 92 2E P9 +498

NM\$	+151			
PTA	+3.06SCC	+0.2PL	-0.4DPR	
PTA	+1062M	+26F	+31P	59R
PTA\$	+151CY			8/14
PTA%		-.08	-.01	
PTAT	+1.00T		59R	8/14
PPA	+2830M	+72F	+102P	
CLASS	ST8 SR7 BD8 DF8 RA5 RW7 LS5 FA6			
	FU8 UH9 UW9 UC6 UD5 TP5 TL7 LR8			
DHI		%	FAT %	PRT
2-00	2 305 15474	4.2	652 3.4	527
3-02	2 305 18396	3.5	641 3.5	647
4-04	2 301 22125	3.6	799 3.3	738
5-04	2 305 22847	3.5	791 3.2	731
	345 24626	3.5	873 3.2	795
6-05	2 257 20690	3.3	678 3.0	611
	PROJ 22966	3.2	746 3.0	678

GRAND CHAMPION - 2011 & 2012 PA STATE FARM SHOW
 GRAND CHAMPION - 2010, 2011 & 2012 SOUTH MOUNTAIN FAIR

FARAH'S DAUGHTERS:
 BARRENS VIEW J-MAN FERRARI, VG-85
 TWO 1/14 BURDETTE ET HEIFERS

BURDETTE EMBRYOS AVAILABLE

GALNEY-EPC RIPKEN RAVEN

100203204
 PTA +3.32SCC -1.3PL -0.8DPR
 PTA +1254M +20F +26P 96R
 PTA% -.15 -.07
 PTAT +1.20T 89R 8/14
 D/AV 20406M 3.7 753F 3.1 625P 8.4T

SUNRISE RIDGE FELICITY

100203718 7-11 90

GOLD		%	FAT %	PRT
1-10	2 305 14510	4.1	596 3.1	443
3-04	2 305 21000	3.5	739 3.1	652
	335 22050	3.5	780 3.1	689
4-06	2 277 18560	3.9	732 3.1	573
5-05	2 286 20190	3.7	741 2.9	593
6-05	2 305 18550	3.8	698 3.1	572
	LIFE 1815 110000	3.9	4251 3.1	3384

GRANDDAM: HUTTERS-FD FESTIVAL FREEDOM

1003242

GOLD		%	FAT %	PRT
5-02	3 218 13050	3.5	459 3.2	419
7-01	2 305 21830	3.5	771 3.1	673

Barrens View Farm
 THE BAUMGARDNER FAMILY

237 W Barrens Church Rd
 Dillsburg PA 17019

Dan (717) 432-3169 • Justin (717) 357-2524 • Nathan (717) 357-2563

E-mail: wildcowz@hughes.net

HEINEMAN BURDETTE BUGATTI

VERY GOOD-88



HEINEMAN BURDETTE BUGATTI

PUREBRED AYRSHIRE 09/02/11 FEMALE
100630646 2-06 88 P9 +503

NM\$	+191							
PTA	+3.01SCC	+0.9PL						
PTA	+583M	+20F	+20P	46R				
PTA\$	+191CY			8/14				
PTA%		-.01	+.01					
PTAT	+1.80T		48R	8/14				
PPA	+1682M	+57F	+54P					
CLASS	ST5	SR5	BD6	DF5	RA3	RW5	LS6	FA6
	FU6	UH6	UW5	UC6	UD7	TP7	TL3	LR7
2-00	2	305	15316	4.4	712	3.3	532	
		354	18480	4.4	822	3.3	614	

2ND FALL CALF - 2012 MID-ATLANTIC NATIONAL

HEINEMAN-FULLER, ANGELA
4523 CAPWELL RD.
ATTICA NY 14011
585-322-3148

PALMYRA TRI-STAR BURDETTE-ET

100419568
PTA +2.82SCC +1.5PL +0.6DPR
PTA +716M +25F +27P 98R
PTA% -.02 +.02
PTAT +1.90T 95R 8/14
D/AV 19538M 3.9 758F 3.2 618P 8.5T

PALMYRA RAMI BONNIE BENTLY-ET

100540738 5-09 91 2E
DHI % FAT % PRT
2-03 2 286 11980 4.0 484 3.2 389
3-03 2 287 12820 3.8 490 3.3 419
4-03 2 305 17820 4.2 755 3.3 591
327 18250 4.2 772 3.3 608

GRANDDAM: PALMYRA PARDNER T.S. BONNIE

100294794 3-09 90
GOLD % FAT % PRT
2-01 2 305 24840 4.1 1016 3.2 800
365 29585 4.2 1228 3.3 964
3-04 2 305 26140 4.2 1089 3.1 806
365 30840 4.1 1273 3.1 955

1ST JR 2-YEAR-OLD - 2005 MID-ATLANTIC NAT'L
1ST JR 2-YEAR-OLD - 2005 CENTRAL NATIONAL
UNAN ALL-AMERICAN JR 2-YEAR-OLD - 2005
1ST JR 3-YEAR-OLD - 2006 MID-ATLANTIC NAT'L
INTERMEDIATE CHAMP - 2006 MID-ATLANTIC NAT'L
2ND JR 3-YEAR-OLD - 2006 CENTRAL NATIONAL
RES ALL-AMERICAN JR 3-YEAR-OLD - 2006
NOM ALL-AMERICAN 4-YEAR-OLD - 2007

Heineman Farms

DAVE & ANGELA FULLER • GORDON & SUSAN HEINEMAN

4517 Capwell Rd.
Attica, NY 14011
(585) 322-3148

SUNNY-ACRES TSB SILK EXCELLENT-92



SUNNY-ACRES TSB SILK

PUREBRED AYRSHIRE 08/20/09 FEMALE
100579596 3-11 92 P9 +472

NM\$	+156								
PTA	+2.92SCC	+0.6PL	-0.4DPR						
PTA	+271M	+12F	+13P	56R					
PTA\$	+156CY			8/14					
PTA%	+0.01		+0.02						
PTAT	+1.40T		59R	8/14					
PPA	+1559M	+80F	+54P						
CLASS	ST6	SR4	BD7	DF8	RA4	RW7	LS5	FA4	
	FU7	UH8	UW7	UC6	UD5	TP4	TL3	LR8	
GOLD				%	FAT	%	PRT		
2-03	2	305	21390	4.6	988	3.3	708		
		308	21630	4.6	1002	3.3	716		
3-04	2	305	28370	3.9	1100	3.1	877		
		343	30570	3.9	1185	3.1	958		
4-06	2	164	18857	3.8	716	2.9	533		
							RIP		
							861		
	PROJ	29490			1135		861		

 2ND 4-YEAR-OLD - 2013 MID-ATLANTIC NATIONAL
 1ST 4-YEAR-OLD - 2013 INTERNATIONAL
 SENIOR CHAMPION - 2013 INTERNATIONAL
 GRAND CHAMPION - 2013 INTERNATIONAL
 ALL-AMERICAN 4-YEAR-OLD - 2013
 2ND 5-YEAR-OLD - 2014 MID-ATLANTIC NATIONAL
 1ST 5-YEAR-OLD - 2014 NY STATE FAIR
 GRAND & SR CHAMPION - 2014 NY STATE FAIR
 2ND 5-YEAR-OLD - 2014 MID-ATLANTIC NATIONAL

3/14 POKER DAUGHTER
 WILL IVF THIS WINTER
 INQUIRIES WELCOME

PALMYRA TRI-STAR BURDETTE-ET

100419568
 PTA +2.82SCC +1.5PL +0.6DPR
 PTA +716M +25F +27P 98R
 PTA% -.02 +.02
 PTAT +1.90T 95R 8/14
 D/AV 19538M 3.9 758F 3.2 618P 8.5T

SUNNY-ACRES WILTON'S SATIRE

100470020 2-04 82
 DHI % FAT % PRT
 2-02 2 300 13880 3.9 547 3.4 465

GRANDDAM: SUNNY-ACRES NOLAN'S SATIN

100390623 5-00 90
 GOLD % FAT % PRT
 1-11 2 305 18480 4.0 741 3.5 644
 348 20640 4.1 848 3.5 728
 3-00 2 272 15000 3.9 583 3.7 556
 4-05 2 336 23390 4.2 980 3.3 779
 5-06 2 305 30020 4.5 1348 3.3 989
 365 32790 4.5 1491 3.4 1102
 7-03 2 305 26180 3.6 936 3.3 872
 349 28970 3.6 1045 3.4 974
 LIFE 1683 121110 4.1 4958 3.4 4152

Sunny Acres
DOUG & KATHE EVANS & FAMILY
 4106 Davenport Rd., Georgetown, NY 13072
 315.837.4777 • Andrew Cell 315.750.0719 • Gregory Cell 315.456.8283
 sunnyacresayrshires@gmail.com

SUNNY-ACRES TSB SPICY

EXCELLENT-93 2E



SUNNY-ACRES TSB SPICY

PUREBRED AYRSHIRE 07/30/08 FEMALE
 100543049 5-07 93 2E P9 +463
 NM\$ +216
 PTA +2.80SCC +2.1PL +1.1DPR
 PTA +215M +9F +11P 59R
 PTA\$ +216CY 8/14
 PTA% +.03
 PTAT +1.00T 62R 8/14
 PPA +1325M +60F +54P
 CLASS ST9 SR9 BD9 DF7 RA5 RW8 LS4 FA4
 FU7 UH8 UW9 UC6 UD5 TP7 TL7 LR8
 GOLD % FAT % PRT
 2-03 2 278 19890 4.3 852 3.2 639
 3-02 2 305 25090 4.1 1041 3.3 830
 322 25780 4.1 1066 3.3 854
 4-04 2 305 29990 3.2 967 3.1 937
 337 31100 3.2 1010 3.1 978
 5-07 2 160 19935 4.1 811 3.1 589
 PROJ 29868 1190 911

1ST AGED COW - 2014 NY STATE FAIR
 RES SR & RES GRAND - 2014 NY STATE
 FAIR

3/14 NAPIER DAUGHTER
 DAM OF SUNNY-ACRES HARMONY'S SUGAR

PALMYRA TRI-STAR BURDETTE-ET

100419568
 PTA +2.82SCC +1.5PL +0.6DPR
 PTA +716M +25F +27P 98R
 PTA% -.02 +.02
 PTAT +1.90T 95R 8/14
 D/AV 19538M 3.9 758F 3.2 618P 8.5T

SUNNY-ACRES JJ SALTINE

100390575 6-01 90
 GOLD % FAT % PRT
 4-01 2 365 23570 4.1 960 3.2 756
 5-08 2 342 25650 3.7 954 3.1 795
 6-09 2 319 23660 3.7 877 2.9 693
 7-11 2 268 20360 3.7 760 3.1 629
 LIFE 1991 132610 3.8 5074 3.1 4168

GRANDDAM: SUNNY-ACRES SKITTLES KIN

100178861 6-01 94 2E
 GOLD % FAT % PRT
 3-10 2 299 16620 3.3 542 3.2 524
 4-11 2 295 19410 3.3 646 3.0 588
 5-10 2 325 19330 3.5 674 3.2 614
 7-00 2 365 23140 3.6 834 3.2 741
 LIFE 1882 110270 3.5 3883 3.2 3476

NOM JR ALL-AMERICAN SUMMER YEARLING - 2001
 HM JR ALL-AMERICAN JR 2-YEAR-OLD - 2002
 NOM ALL-AMERICAN JR 2-YEAR-OLD - 2003
 HON MEN ALL-AMERICAN JR 3-YEAR-OLD - 2003
 NOM ALL-AMERICAN 5-YEAR-OLD - 2005
 NOM JR ALL-AMERICAN 5-YEAR-OLD - 2005
 RES JR ALL-AMERICAN AGED COW - 2006
 NOM JR ALL-AMERICAN AGED COW - 2007

Sunny Acres
DOUG & KATHE EVANS & FAMILY
 4106 Davenport Rd., Georgetown, NY 13072
 315.837.4777 • Andrew Cell 315.750.0719 • Gregory Cell 315.456.8283
 sunnyacresayrshires@gmail.com

SUNNY-ACRES HARMONY'S SUGAR

VERY GOOD-86



SUNNY-ACRES HARMONY'S SUGAR

PUREBRED AYRSHIRE 11/20/10 FEMALE
 100604993
 3-03 86 P- +413

NM\$ +179
 PTA +2.76SCC +2.9PL +1.9DPR
 PTA -374M -7F -9P 49R
 PTA\$ +179CY 8/14
 PTA% +.04 +.02
 PTAT +.80T 49R 8/14
 PPA -444M +3F -2P

CLASS ST6 SR5 BD5 DF6 RA4 RW6 LS5 FA5
 FU9 UH7 UW7 UC6 UD7 TP6 TL4 LR7

GOLD % FAT % PRT
 2-08 2 294 18790 4.3 807 3.3 617
 3-07 2 PROJ 22045 3.7 806 3.0 653

1ST SR 3-YEAR-OLD - 2014 NY STATE FAIR
 HM SR CHAMPION - 2014 NY STATE FAIR
 1ST SR 3-YEAR-OLD - 2014 MID-ATLANTIC NAT'L

7/14 RANEY DAUGHTER

KELLCREST HARMONY-ET

10029042C
 PTA +2.76SCC +1.6PL +2.0DPR
 PTA -921M -30F -30P 96R
 PTA% +.04
 PTAT +.70T 89R 8/14
 D/AV 17346M 3.9 670F 3.1 543P 8.4T

SUNNY-ACRES TSB SPICY

100543049 5-07 93 2E

GOLD % FAT % PRT
 2-03 2 278 19890 4.3 852 3.2 639
 3-02 2 305 25090 4.1 1041 3.3 830
 322 25780 4.1 1066 3.3 854
 4-04 2 305 29990 3.2 967 3.1 937
 337 31100 3.2 1010 3.1 978

GRANDDAM: SUNNY-ACRES JJ SALTINE

100390575 6-01 90

GOLD % FAT % PRT
 2-02 2 277 15760 4.1 643 3.3 513
 3-02 2 305 20100 3.7 745 3.2 652
 306 20140 3.7 746 3.2 654
 5-08 2 305 24440 3.7 899 3.1 748
 342 25650 3.7 954 3.1 795
 6-09 2 305 23300 3.7 861 2.9 679
 319 23660 3.7 877 2.9 693
 7-11 2 268 20360 3.7 760 3.1 629
 LIFE 1991 132610 3.8 5074 3.1 4168

Sunny Acres

DOUG & KATHE EVANS & FAMILY

4106 Davenport Rd., Georgetown, NY 13072

315.837.4777 • Andrew Cell 315.750.0719 • Gregory Cell 315.456.8283

sunnyacresayrshires@gmail.com

PALMYRA-RAGIMORE-EV B GIGI

VERY GOOD-89



PALMYRA-RAGIMORE-EV B GIGI

PUREBRED AYRSHIRE 06/01/11 FEMALE
 70270039 2-04 89 P9 +564
 NM\$ +381
 PTA +2.82SCC +1.6PL -0.1DPR
 PTA +1228M +40F +38P 54R
 PTA\$ +381CY 8/14
 PTA%
 PTAT +2.00T - .04 55R 8/14
 PPA +3091M +140F +109P
 CLASS ST7 SR5 BD6 DF7 RA5 RW6 LS5 FA6
 FU6 UH8 UW7 UC7 UD6 TP6 TL3 LR7
 GOLD % FAT % PRT
 2-00 2 305 22600 4.3 966 3.3 748
 365 25910 4.3 1111 3.3 862

#9 8/14 ELITE CPI LIST

1ST SUMMER YEARLING - 2012 MID-ATLANTIC NAT'L
 RES JR CHAMPION - 2012 MID-ATLANTIC NATIONAL
 2ND SUMMER YEARLING - 2012 INTERNATIONAL
 RES ALL-AMERICAN SUMMER YEARLING - 2012
 1ST JR 2-YEAR-OLD - 2013 MID-ATLANTIC NAT'L
 INT CHAMPION - 2013 MID-ATLANTIC NATIONAL
 RES GRAND CHAMPION - 2013 MID-ATLANTIC NAT'L
 2ND JR 2-YEAR-OLD - 2013 SOUTHERN NATIONAL
 RES INT CHAMP - 2013 SOUTHERN NATIONAL
 RES ALL-AMERICAN JR 2-YEAR-OLD (TIE) - 2013

OWNED IN PARTNERSHIP WITH EDMUND
 ELS, RAIGMORE TRUST, & BARTI
 VOLSCHENK

7 GENERATIONS OF ELITE GENETICS
 5 GENERATIONS OF ALL-AMERICAN
 NOMINATIONS

PALMYRA TRI-STAR BURDETTE-ET

100419568
 PTA +2.82SCC +1.5PL +0.6DPR
 PTA +716M +25F +27P 98R
 PTA% - .02 +.02
 PTAT +1.90T 95R 8/14
 D/AV 19538M 3.9 758F 3.2 618P 8.5T

PALMYRA POKER GIGI-ET

65459562 4-07 90
 GOLD % FAT % PRT
 2-03 2 358 22110 4.3 951 3.1 682
 3-05 2 300 20780 3.4 708 3.0 631
 4-05 2 337 24780 3.7 911 3.1 780

2ND WINTER CALF - 2008 MID-ATLANTIC NATIONAL
 1ST SR 2-YEAR-OLD - 2010 MID-ATLANTIC NAT'L
 NOM ALL-AMERICAN SR 2-YEAR-OLD - 2010
 3RD SR 3-YEAR-OLD - 2011 SOUTHERN NATIONAL

PALMYRA RAVEN S. GINGER

100330199 6-03 89
 GOLD % FAT % PRT
 1-11 2 365 27710 3.0 841 3.0 842
 3-04 2 334 23170 3.2 749 3.0 701
 4-06 2 365 35760 4.5 1626 2.9 1052
 5-11 2 365 22720 4.0 899 2.9 670
 7-03 2 365 33490 4.3 1453 2.9 976
 LIFE 2484 166320 3.8 6358 3.0 4994

ALL-AMERICAN FALL CALF - 2004
 JR ALL-AMERICAN FALL CALF - 2004
 RES INT CHAMPION - 2005 MID-ATLANTIC NAT'L
 INT CHAMPION - 2005 MID-ATLANTIC NAT'L JR
 GRAND CHAMPION - 2005 MID-ATLANTIC NAT'L JR
 UNAN ALL-AMERICAN FALL YRLG IN MILK - 2005
 UNAN JR ALL-AMERICAN FALL YRLG IN MILK - 2005



18811 Wagaman Rd.
 Hagerstown, MD 21740
 Phone: (301) 739-2729
 Fax: (301) 733-9255
 palmyraayrshires@aol.com
 www.palmyrafarm.net

MAPLE-DELL OBLIQUE DARLENE-ET

EXCELLENT-91



MAPLE-DELL OBLIQUE DARLENE-ET

95.97% AYRSHIRE 01/27/11 FEMALE
 65302703 95.97%
 3-04 91 ELITE P9 +572

NM\$ +615
 PTA +2.80SCC +5.6PL +1.3DPR
 PTA +796M +68F +29P 51R
 PTA\$ +615CY 8/14
 PTA%
 PTAT +1.70T +.20 +.02
 PPA +1985M +179F +76P 52R 8/14
 CLASS ST8 SR7 BD7 DF6 RA4 RW7 LS5 FA6
 FU6 UH7 UW9 UC6 UD5 TP6 TL5 LR7

GOLD % FAT % PRT
 2-00 2 336 17870 4.4 784 3.2 575
 3-01 2 PROJ 24954 5.1 1265 3.2 795

#6 8/14 ELITE CPI COW

2ND WINTER YRLG - 2012 MID-ATLANTIC NAT'L JR
 1ST WINTER YRLG - 2012 MID-ATLANTIC NAT'L
 1ST SR 2 - 2013 MID-ATLANTIC NATIONAL JR
 2ND SR 2 - 2013 MID-ATLANTIC NATIONAL
 NOM JR ALL-AMERICAN SR 2 - 2013

DEE'S SHOW PLACINGS:

NOM ALL-AMERICAN FALL CALF - 2008
 NOM JR ALL-AMERICAN FALL CALF - 2008
 NOM ALL-AMERICAN FALL YEARLING - 2009
 HM JR ALL-AMERICAN FALL YEARLING - 2009
 NOM ALL-AMERICAN SR 2-YEAR-OLD - 2010
 HM JR ALL-AMERICAN SR 2-YEAR-OLD - 2010
 RES INT CHAMP - 2011 MID-ATLANTIC NAT'L JR
 NOM ALL-AMERICAN SR 3-YEAR-OLD - 2011
 NOM JR ALL-AMERICAN SR 3-YEAR-OLD - 2011
 SR CHAMPION - 2012 MID-ATLANTIC NATIONAL JR
 2ND AGED COW - 2014 MID-ATLANTIC NATIONAL JR

JELYCA OBLIQUE

7407843C 91.95%
 PTA +2.86SCC +4.3PL +1.4DPR
 PTA +742M +56F +25P 92R
 PTA% +.15 +.01
 PTAT +.80T 88R 8/14
 D/AV 20732M 4.0 829F 3.2 663P 8.4T

MAPLE-DELL TRIDENT DEE-ET

100510791 6-08 92 2E
 GOLD % FAT % PRT
 2-04 2 358 21010 4.7 984 3.6 749
 3-05 2 365 26890 4.5 1208 3.4 906

#45 8/14 ELITE CPI COW
 DAM OF MAPLE-DELL BURDETTE DEMPSEY AT
 ACCELERATED GENETICS & MAPLE-DELL O
 DIXON AT SELECT SIRE

GRANDDAM: MAPLE-DELL ZORRO DAFOURTH

100257070 6-06 95 2E
 GOLD % FAT % PRT
 2-00 2 305 22380 4.3 958 3.3 737
 3-00 2 310 22000 4.0 871 3.1 682
 4-00 2 365 26200 4.6 1203 3.3 864
 6-01 2 365 30950 4.5 1387 3.0 939
 7-11 2 365 27930 4.3 1193 3.0 838
 9-06 2 305 23220 4.7 1098 2.9 668
 LIFE 2287 165180 4.4 7191 3.1 5148

NOM ALL-AMERICAN JR 2-YEAR-OLD - 2004
 INT CHAMPION - 2005 MID-ATLANTIC NATIONAL
 RES ALL-AMERICAN JR 3-YEAR-OLD - 2005
 GRAND CHAMPION - 2006 MID-ATLANTIC NATIONAL
 RES GRAND CHAMPION - 2006 CENTRAL NATIONAL
 RES ALL-AMERICAN 4-YEAR-OLD - 2006

Maple-Dell Farm
DAVID PATRICK & FAMILY
 1960 Daisy Rd., Woodbine, MD 21797
 (410) 489-4160

PRINCESS GINGER



PRINCESS GINGER
PUREBRED AYRSHIRE
65302789

03/27/12 FEMALE

P- +439

1ST TWO TESTS: 63 & 64 LBS

2ND SPRING YEARLING - 2013 MID-ATLANTIC
NATIONAL JR
2ND SPRING YEARLING - 2013 MID-ATLANTIC
NATIONAL

1ST JR 2-YEAR-OLD - 2014 MID-ATLANTIC
NATIONAL JR

3RD JR 2-YEAR-OLD - 2014 MID-ATLANTIC
NATIONAL

1ST JR 2-YEAR-OLD - 2014 MD STATE FAIR
RES GRAND CHAMPION - 2014 MD STATE 4-H SHOW

PRINCESS'S MISTER LINCOLN

100609943

PRINCESS GENEVA

100585562 3-11 86

GOLD			%	FAT	%	PRT	
2-04	2	305	16250	4.5	737	3.4	556
3-07	2	305	22060	4.1	898	3.1	688

GRANDDAM:

MAPLE-DELL CHARLESTON GIGGLE

100367133 8-04 90

GOLD			%	FAT	%	PRT	
2-01	2	215	9900	4.5	443	3.5	349
3-01	2	251	14800	4.4	656	3.4	497
3-11	2	305	16880	4.0	681	3.1	527
8-02	2	305	15960	4.5	720	3.0	472

Maple-Dell Farm
DAVID PATRICK & FAMILY
1960 Daisy Rd., Woodbine, MD 21797
(410) 489-4160

FOL-AYR G. HOTLIPS OF MDF2

EXCELLENT-91 3E



FOL-AYR G. HOTLIPS OF MDF2

PUREBRED AYRSHIRE 09/06/04 FEMALE
 100377710
 8-00 91 3E P5 +413
 NM\$ -23
 PTA +2.83SCC -0.4PL -0.2DPR
 PTA -242M -5F -7P 56R
 PTA\$ -23CY 8/14
 PTA% +.02
 PTAT +.80T 56R 8/14
 PPA +117M +9F +9P
 CLASS ST9 SR7 BD7 DF8 RA5 RW8 LS7 FA5
 FU8 UH7 UW7 UC7 UD6 TP7 TL5 LR5
 GOLD % FAT % PRT
 2-06 2 301 16520 4.2 698 3.1 519
 7-05 2 305 17470 4.0 705 3.0 528
 327 18050 4.1 736 3.1 555

 1ST FALL CALF - 2005 EASTERN STATES NAT'L JR
 3RD AGED COW - 2012 EASTERN STATES NATIONAL

POKER, REALITY, SIMBAD & CAPTAIN
 EMBRYOS AVAILABLE

BONNIE BRAE GARTH

10006450C
 PTA +3.07SCC -0.5PL +0.3DPR
 PTA -719M -28F -19P 90R
 PTA% +.02
 PTAT +.80T 82R 8/14
 D/AV 18086M 3.8 683F 3.1 568P

CHATEAU GAI HEATHER 19E

1012847 2-09 86
 DHI % FAT % PRT
 5-05 2 305 23670 4.0 941 3.0 710
 315 24140 4.0 960 3.0 728
 6-05 2 305 19620 4.0 775 3.2 634
 348 21350 3.9 837 3.3 700
 7-06 2 305 22300 3.5 774 2.9 656
 341 23660 3.5 827 3.0 703

GRANDDAM: CHATEAU GAI BONNIE 8A

780162C EX-90 3E CAN
 LIFE 117110 4.1 4760 3.2 3796 CAN

Ethier Acres

ALAIN ETHIER

40 Summit Lake Rd. Spur
 Argyle, NY 12809

(518-638-6597) • E-mail: alainethier@nycap.rr.com

ETHIER-ACRES POKER HOULAHOO-ET

EXCELLENT-90



ETHIER-ACRES POKER HOULAHOO-ET

PUREBRED AYRSHIRE 07/18/10 FEMALE
 100601431 3-03 90 P8 +456

NM\$	+145						
PTA	+2.79SCC	+0.6PL	-0.5DPR				
PTA	+248M	+19F	+7P	51R			
PTA\$	+145CY			8/14			
PTA%		+0.05	-.01				
PTAT	+ .70T		53R	8/14			
PPA	+1447M	+71F	+43P				
CLASS	ST5 SR5 BD6 DF6 RA3 RW5 LS5 FA6						
	FU6 UH6 UW6 UC6 UD7 TP7 TL2 LR8						
GOLD		%	FAT %	PRT			
2-01	2 219 10970	4.2	459 3.0	331			
	310 15200	4.1	629 3.2	481			
3-01	2 303 18640	4.0	739 3.2	601			

OWNED BY
 RIDALE GENETICS, WOODSTOCK, VT

DES CHAMOIS POKER-ET

8401621C
 PTA +2.84SCC +1.6PL -0.9DPR
 PTA +318M +25F +7P 98R
 PTA% +.07 -.02
 PTAT +.60T 96R 8/14
 D/AV 19609M 3.9 773F 3.1 615P 8.4T

FOL-AYR G. HOTLIPS OF MDF2

100377710 8-00 91 3E
 GOLD % FAT % PRT
 2-06 2 301 16520 4.2 698 3.1 519
 7-05 2 305 17470 4.0 705 3.0 528
 327 18050 4.1 736 3.1 555

1ST FALL CALF - 2005 EASTERN STATES NAT'L JR
 3RD AGED COW - 2012 EASTERN STATES NATIONAL

GRANDDAM: CHATEAU GAI HEATHER 19E

1012847 2-09 86
 DHI % FAT % PRT
 5-05 2 305 23670 4.0 941 3.0 710
 315 24140 4.0 960 3.0 728
 6-05 2 305 19620 4.0 775 3.2 634
 348 21350 3.9 837 3.3 700
 7-06 2 305 22300 3.5 774 2.9 656
 341 23660 3.5 827 3.0 703

Ethier Acres

ALAIN ETHIER

40 Summit Lake Rd. Spur

Argyle, NY 12809

(518-638-6597) • E-mail: alainethier@nycap.rr.com

ETHIER-ACRES POKER HOULA-LA-ET

EXCELLENT-91



ETHIER-ACRES POKER HOULA-LA-ET

PUREBRED AYRSHIRE 07/20/10 FEMALE
 100601440 3-11 91 P5 +424

NM\$ +87
 PTA +2.81SCC +0.8PL -0.4DPR
 PTA -11M +4F -3P 51R
 PTA\$ +87CY 8/14
 PTA% +.03 -.02
 PTAT +.80T 49R 8/14
 PPA +261M +1F -3P

CLASS ST6 SR5 BD6 DF8 RA3 RW6 LS6 FA5
 FU6 UH7 UW7 UC7 UD6 TP5 TL4 LR6

DHI % FAT % PRT
 3-07 2 185 14909 3.7 557 2.8 418
 RIP

1ST 4-YEAR-OLD - 2014 EASTERN STATES NAT'L

OWNED BY
 BLUE SPRUCE FARM INC, BRIDPORT, VT

DES CHAMOIS POKER-ET

8401621C
 PTA +2.84SCC +1.6PL -0.9DPR
 PTA +318M +25F +7P 98R
 PTA% +.07 -.02
 PTAT +.60T 96R 8/14
 D/AV 19609M 3.9 773F 3.1 615P 8.4T

FOL-AYR G. HOTLIPS OF MDF2

100377710 8-00 91 3E
 GOLD % FAT % PRT
 2-06 2 301 16520 4.2 698 3.1 519
 7-05 2 305 17470 4.0 705 3.0 528
 327 18050 4.1 736 3.1 555

1ST FALL CALF - 2005 EASTERN STATES NAT'L JR
 3RD AGED COW - 2012 EASTERN STATES NATIONAL

CHATEAU GAI HEATHER 19E

1012847 2-09 86
 DHI % FAT % PRT
 5-05 2 305 23670 4.0 941 3.0 710
 315 24140 4.0 960 3.0 728
 6-05 2 305 19620 4.0 775 3.2 634
 348 21350 3.9 837 3.3 700
 7-06 2 305 22300 3.5 774 2.9 656
 341 23660 3.5 827 3.0 703

Ethier Acres

ALAIN ETHIER

40 Summit Lake Rd. Spur

Argyle, NY 12809

(518-638-6597) • E-mail: alainethier@nycap.rr.com

SHARWARDS CALIMERO KERRY

EXCELLENT-92 2E



SHARWARDS CALIMERO KERRY

95.37% AYRSHIRE 03/28/07 FEMALE
 100515880 95.37%
 6-09 92 2E P9 +510

NM\$ +321
 PTA +2.79SCC +1.6PL +0.3DPR
 PTA +400M +41F +20P 59R
 PTA\$ +321CY 8/14
 PTA% +.14 +.04
 PTAT +1.00T 57R 8/14
 PPA +2366M +157F +88P

CLASS ST5 SR6 BD7 DF6 RA4 RW9 LS5 FA6
 FU8 UH8 UW8 UC6 UD5 TP5 TL3 LR7

GOLD			%	FAT	%	PRT
2-05	2	283	16920	4.6	786	3.2 549
3-03	2	272	17180	4.7	804	3.5 600
5-06	2	305	34414	4.3	1484	3.0 1028
			365	34660	4.6	1583 3.2 1107
6-07	PROJ		31705	3.7	1175	3.1 962

DAM OF SHARWARDS RIGGINS DARRYL AT
 SELECT SIRE

MARGOT CALIMERO

10310847C 90.75%
 PTA +3.02SCC +0.2PL +1.0DPR
 PTA +21M +13F +7P 95R
 PTA% +.06 +.03
 PTAT +1.10T 93R 8/13
 D/AV 19255M 3.9 750F 3.2 612P 8.5T

SHARWARDS CANNON KERRY

100421688

GRANDDAM: SHARWARDS BBBK KEEPER

100123423 3-11 88

GOLD			%	FAT	%	PRT
2-02	2	305	19170	4.2	805	3.1 602
			307	19280	4.2	812 3.1 606
3-01	2	305	20090	3.7	752	3.1 626
			346	21920	3.8	829 3.2 691
4-02	2	305	22810	3.4	784	3.1 710
			365	25950	3.5	909 3.2 818

FOURTH DAM: VG-86

3-02 2 305 21560 4.0 854 3.1 679

FIFTH DAM: VG-89

Kerry Partners

DAVE KOSS
 (563) 543-0440

DANE LANG
 (641) 990-5096

BLAKE BIEBER
 (319) 480-6263

23820 Pleasant Grove Rd. E, Epworth, IA 52045
 skipalayrshires@aol.com

GREENCREST MICHELE

EXCELLENT-92 5E



GREENCREST MICHELE

PUREBRED AYRSHIRE 03/25/02 FEMALE
 100254983 11-01 92 5E P9 +450
 NM\$ +93
 PTA +3.02SCC -0.3PL +0.9DPR
 PTA +270M +17F +10P 59R
 PTA\$ +93CY 8/14
 PTA%
 PTAT +.40T +.04 +.01 52R 8/14
 PPA +3047M +138F +103P
 CLASS ST8 SR9 BD9 DF8 RA5 RW6 LS6 FA4
 FU9 UH8 UW8 UC7 UD6 TP5 TL5 LR4
 GOLD % FAT % PRT
 1-11 2 304 17650 4.3 766 3.3 588
 2-11 2 305 23740 4.6 1083 3.3 785
 311 23890 4.6 1092 3.3 793
 4-01 2 305 22760 3.9 887 3.2 733
 365 25630 4.1 1051 3.2 830
 5-05 2 305 19900 4.0 793 3.2 638
 335 20810 4.0 836 3.2 670
 6-06 2 305 15690 4.2 666 3.5 547
 310 15870 4.2 673 3.5 553
 7-06 2 267 17870 3.7 653 3.2 567
 8-05 2 305 14770 4.0 592 3.4 500
 318 14980 4.0 602 3.4 508
 9-06 2 305 19430 3.4 651 2.9 572
 333 20010 3.4 685 3.0 595
 10-07 2 297 10750 4.0 432 3.4 363
 LIFE 2854 168030 4.1 6831 3.3 5487

1ST JR 2-YEAR-OLD - 2004 SOUTHERN NATIONAL JR
 HM JR ALL-AMERICAN JR 2-YEAR-OLD - 2004

DAUGHTERS:

GATTON SWEDMARK MISSLE, EX-90 2E
 GATTON TRAVELER MICAH, EX-91

HARLEQUIN COLOMBO

818266C
 PTA +3.47SCC -4.8PL +0.6DPR
 PTA +31M +3F -2P 87R
 PTA% +.01 -.02
 PTAT -.40T 69R 8/14
 D/AV 0M 0F 8.5T

DES FLOTS BLEUS BBG JALOUSIE

10309438C

GRANDDAM: DES FLOTS BLEUS TED FERRARI

10006328C

NEXT DAM: DES FLOTS BLEUS DIXIE

EX-90 3E CAN

Still Dreamn Dairy
JESSICA GATTON-DIXON & BRETT DIXON

PO Box 39, Conway MO 65632

Phone: (417-844-7217)

E-mail: stilldreamndairy@hotmail.com

CEDARVALE BLACK CHINA

EXCELLENT-92



CEDARVALE BLACK CHINA

PUREBRED AYRSHIRE 03/01/01 FEMALE
100190933

9-02 92 P- +352

NM\$ -105
PTA +3.04SCC +0.6PL +0.5DPR
PTA -717M -36F -19P 47R
PTA\$ -105CY 8/14
PTA%
PPA -1824M -96F -46P

CLASS ST9 SR9 BD9 DF8 RA5 RW8 LS7 FA4
FU5 UH7 UW8 UC6 UD5 TP6 TL6 LR9

GOLD				%	FAT	%	PRT
2-03	2	305	15580	3.9	607	3.7	572
			348	17610	3.9	690	3.7
3-04	2	305	17860	3.8	677	3.5	629
			346	19300	3.8	729	3.5
4-07	2	305	22600	3.4	760	3.3	751
			365	25030	3.4	852	3.4
6-04	2	305	22150	3.5	781	3.3	737
			365	25540	3.6	922	3.4
8-09	2	305	24330	3.2	771	3.2	775
			323	24850	3.2	792	3.2
10-02	2	305	19880	3.6	724	3.2	643
			352	21700	3.7	797	3.3
LIFE			2204	137840	3.6	4956	3.4
						4700	

EMBRYOS RECENTLY IMPLANTED BY
BONOPARTE, MILKY WAY 2, PREDATOR,
DREAMER & BURDETTE

PLANNED FLUSHES TO SIMBAD, JAZZMAN,
PRETTY BOY & MCQUEEN

ALL OTHER INQUIRIES WELCOME

BLACKADDAR B B KELLOGG

777850C

PTA +3.12SCC +0.7PL
PTA -671M -32F -14P 98R
PTA% -0.4 +.04
PTAT +1.30T 97R 8/14
D/AV 18025M 3.8 691F 3.2 576P

MAPLEBROOK CHI-CHI

100012501 5-09 88

NOM JR ALL-AMERICAN 5-YEAR-OLD - 2000

CHINA'S SHOW WINNINGS:

2ND JR 2-YEAR-OLD - 2003 CENTRAL NATIONAL
2ND JR 3-YEAR-OLD - 2004 CENTRAL NATIONAL
1ST JR 3-YEAR-OLD - 2004 CENTRAL NATIONAL JR
RES ALL-AMERICAN JR 3-YEAR-OLD - 2004
RES JR ALL-AMERICAN JR 3-YEAR-OLD - 2004
1ST 4-YEAR-OLD - 2005 SOUTHERN NATIONAL JR
HM ALL-AMERICAN 4-YEAR-OLD - 2005
JR ALL-AMERICAN 4-YEAR-OLD - 2005
1ST AGED COW - 2007 CENTRAL NATIONAL JR
SENIOR CHAMPION - 2007 CENTRAL NATIONAL JR
GRAND CHAMPION - 2007 CENTRAL NATIONAL JR
NOM ALL-AMERICAN AGED COW - 2007
JR ALL-AMERICAN AGED COW - 2007
NOM ALL-AMERICAN AGED COW - 2011

Blackstone Genetics

ZACHARY DAMROW

2508 Simons Ln.

American Falls, ID 83211

(920) 344-2065

zachary.damrow@gmail.com

STEAM-VALLEY WILTON MAGIC BRI

EXCELLENT-94 2E



STEAM-VALLEY WILTON MAGIC BRI

PUREBRED AYRSHIRE 06/24/06 FEMALE
 100475641 5-03 94 2E P8 +443

NM\$ -25
 PTA +3.16SCC -1.8PL -0.6DPR
 PTA +378M +5F +17P 60R
 PTA\$ -25CY 8/14
 PTA%
 PTAT +.50T -.05 +.03 38R 8/14
 PPA +1966M +34F +72P

CLASS	ST9	SR8	BD9	DF9	RA5	RW9	LS6	FA7
	FU5	UH9	UW9	UC8	UD4	TP5	TL7	LR9
DHI				%	FAT	%	PRT	
2-04	2	305	15940	4.1	659	3.3	526	
		313	16280	4.1	673	3.3	537	
3-04	2	352	23530	3.6	845	3.1	726	
4-10	2	305	26430	3.6	963	3.1	813	
		336	28210	3.6	1004	3.1	878	
5-11	2	364	32470	3.3	1058	3.0	977	
7-01	2	273	23050	3.2	732	3.0	695	
LIFE	1638	123540	3.5	4312	3.1	3813		

3RD SUMMER YEARLING - 2007 CENTRAL NATIONAL
 1ST 5-YEAR-OLD - 2011 INTERNATIONAL
 SENIOR CHAMPION - 2011 INTERNATIONAL
 GRAND CHAMPION - 2011 INTERNATIONAL
 UNAN ALL-AMERICAN 5-YEAR-OLD - 2011
 ALL-WORLD 5-YEAR-OLD - 2011
 3RD AGED COW - 2012 INTERNATIONAL
 HM ALL-AMERICAN AGED COW - 2012
 1ST 100,000 LB COW - 2013 INTERNATIONAL
 TOTAL PERFORMANCE WINNER - 2013
 INTERNATIONAL SHOW
 UNAN ALL-AMERICAN 100,000 LB COW - 2013

OWNED WITH JOHN CANNON

LABRIE WILTON-ET

100304106C
 PTA +3.30SCC -3.3PL -1.5DPR
 PTA -12M -12F +11P 97R
 PTA% -.07 +.06
 PTAT +.80T 95R 8/14
 D/AV 18467M 3.8 693F 3.2 591P 8.4T

AYRDELL'S TRI MAGIC BARBIE

100381421 2-01 85

GOLD		%	FAT	%	PRT
2-00	2	265	15370	3.4	520 3.0 462
3-00	2	272	8030	3.9	316 2.9 229

1ST SUMMER YEARLING - 2005 SOUTHERN NATIONAL
 3RD SUMMER YEARLING - 2005 SOUTHERN NAT'L JR
 NOM ALL-AMERICAN SUMMER YEARLING - 2005
 HM JR ALL-AMERICAN SUMMER YEARLING - 2005

GRANDDAM: AYRDELL'S JETSTREAM BARBRA

100250224

GOLD		%	FAT	%	PRT
2-07	2	305	15260	4.9	747 3.3 501
		365	17670	5.0	882 3.3 589

Old Bankston Ayrshires

THE WOLF FAMILY
 24474 N Bankston Rd
 Epworth, IA 52045
 Kurt Wolf (563) 543-2986

GRAND-VIEW RAMIUS PIXIE

EXCELLENT-92



GRAND-VIEW RAMIUS PIXIE

PUREBRED AYRSHIRE 02/02/10 FEMALE
 100588275 4-03 92 P- +408
 PTAT +1.10T 56R 8/14
 GOLD % FAT % PRT
 2-05 2 305 27300 4.5 1215 3.5 950
 365 31030 4.5 1385 3.5 1100

 1ST SR 2-YEAR-OLD - 2012 CENTRAL NATIONAL JR
 RES JR ALL-AMERICAN SR 2-YEAR-OLD - 2012
 1ST 4-YEAR-OLD - 2014 FT WORTH STOCK SHOW

GALNEY-EPC GALANT RAMIUS

100216624
 PTA +3.55SCC +0.2PL +1.3DPR
 PTA +174M +3F +8P 96R
 PTA% -.02 +.01
 PTAT +1.20T 93R 8/14
 D/AV 18962M 3.9 733F 3.2 599P 8.4T

GRAND-VIEW ICEMAN PRIDE

100317361 5-09 90
 GOLD % FAT % PRT
 2-01 2 305 15390 4.0 615 3.0 465
 335 16500 4.1 669 3.1 506
 3-02 2 305 20020 3.8 753 3.1 623
 4-05 2 305 19950 3.8 763 3.2 637
 316 20160 3.8 771 3.2 644
 5-07 2 299 23850 3.5 841 3.1 734
 6-06 2 305 25960 3.3 868 3.1 796
 349 27340 3.4 924 3.1 851
 LIFE 1673 110380 3.7 4068 3.1 3443

GRANDDAM: GRAND-VIEW KELLOGG PEARL-ET

100183890 2-09 83
 GOLD % FAT % PRT
 2-05 2 272 13220 4.3 571 3.3 442

Hall's Ayrshires

GENE HALL JR & PATRICK MYERS & FAMILY
 346494 E. 760 Rd.
 Cushing OK 74023
 Gene: (405) 740-3085

TMB SPECIAL K HELOISE

EXCELLENT-93 3E



TMB SPECIAL K HELOISE

PUREBRED AYRSHIRE 07/19/04 FEMALE
 100386275 8-03 93 3E P7 +439
 NM\$ +286
 PTA +2.85SCC +3.6PL +0.8DPR
 PTA +348M +14F +11P 60R
 PTA\$ +286CY 8/14
 PTAT 38R 8/14
 PFA +1844M +75F +80P
 CLASS ST7 SR8 BD9 DF7 RA6 RW7 LS5 FA6
 FU6 UH7 UW8 UC5 UD3 TP7 TL5 LR8
 GOLD % FAT % PRT
 2-08 2 258 18140 4.4 802 3.2 580
 3-07 2 305 23760 4.0 950 3.4 809
 5-01 2 305 26290 3.4 883 3.6 947
 346 28050 3.4 941 3.6 1014
 6-02 2 305 32490 4.8 1563 3.3 1084
 365 34920 4.8 1675 3.4 1186
 7-10 2 305 24310 3.3 808 3.1 755
 365 26740 3.4 900 3.1 827
 LIFE 1792 135190 4.0 5402 3.4 4563

 1ST 5-YEAR-OLD - 2009 INTERNATIONAL JR
 2ND 5-YEAR-OLD - 2009 SOUTHERN NATIONAL JR
 UNAN JR ALL-AMERICAN 5-YEAR-OLD - 2009
 3RD AGED COW - 2010 SOUTHERN NATIONAL
 2ND AGED COW - 2012 CENTRAL NATIONAL JR
 TOTAL PERFORMANCE WINNER - 2012 CENTRAL
 NATIONAL JR
 UNAN JR ALL-AMERICAN AGED COW - 2012

FOREVER SCHOON SPECIAL K

10305587C
 PTA +3.02SCC +4.1PL +1.3DPR
 PTA -88M -7F -11P 96R
 PTA% -.02 -.04
 PTAT +.20T 90R 8/14
 D/AV 17534M 3.8 665F 3.1 540P 8.3T

TMB STARDOM HOLLYBERRY

100386266 11-09 93 5E
 GOLD % FAT % PRT
 4-01 2 305 27460 3.9 1065 3.1 859
 328 28728 3.9 1109 3.2 906
 5-03 2 252 15310 4.2 643 3.1 482
 6-03 2 305 23910 4.5 1070 3.4 811
 365 27340 4.4 1192 3.4 932
 8-11 2 305 25680 4.3 1116 3.2 829
 349 27150 4.3 1170 3.3 890
 10-01 2 305 28380 4.1 1167 3.0 844
 351 30060 4.1 1234 3.0 902
 11-02 2 305 23260 4.2 973 3.2 738
 LIFE 2169 141678 4.1 5859 3.2 4559

 3RD 4-YEAR-OLD - 2006 CENTRAL NATIONAL
 NOM ALL-AMERICAN 4-YEAR-OLD - 2006
 NOM ALL-AMERICAN 5-YEAR-OLD - 2007

Hall's Ayrshires

GENE HALL JR & PATRICK MYERS & FAMILY
 346494 E. 760 Rd.
 Cushing OK 74023
 Gene: (405) 740-3085)

MUELLERS BBBK CALISTA

EXCELLENT-92 2E



MUELLERS BBBK CALISTA

PUREBRED AYRSHIRE 03/29/06 FEMALE
100464429

	5-08	92		2E P-	+459				
NM\$	+211								
PTA	+3.00SCC	+2.8PFL	+1.0DPR						
PTA	-88M	+7F	+8P		58R				
PTA\$	+211CY				8/14				
PTA%		+0.6	+0.6						
PTAT	+1.10T				49R		8/14		
PPA	+1406M	+89F	+80P						
CLASS	ST9 SR7 BD8 DF7 RA5 RW7 LS6 FA8								
	FU7 UH7 UW7 UC9 UD5 TP7 TL5 LR9								
GOLD		%	FAT	%	PRT				
2-02	2 270	20440	3.9	799	3.4	699			
3-02	2 305	19860	4.3	852	3.6	724			
	341	20680	4.3	899	3.7	761			
4-03	2 305	33470	4.9	1632	3.4	1147			
	365	35970	4.9	1765	3.5	1250			
5-05	2 305	21550	4.4	957	3.6	769			
6-08	2 305	28460	3.1	882	3.6	1037			
	365	32500	3.1	1020	3.6	1167			
LIFE	1834	138200	4.1	5679	3.5	4888			

NOM JR ALL-AMERICAN SPRING YEARLING - 2007
INT CHAMPION - 2008 SOUTHERN NATIONAL JR
RES GRAND CHAMPION - 2008 SOUTHERN NAT'L JR
NOM ALL-AMERICAN JR 2-YEAR-OLD - 2008
RES JR ALL-AMERICAN JR 2-YEAR-OLD - 2008
INT CHAMPION - 2009 SOUTHERN NATIONAL JR
JR ALL-AMERICAN JR 3-YEAR-OLD - 2009
NOM ALL-AMERICAN 4-YEAR-OLD - 2010
NOM JR ALL-AMERICAN 4-YEAR-OLD - 2010
NOM ALL-AMERICAN 5-YEAR-OLD - 2011
NOM JR ALL-AMERICAN 5-YEAR-OLD - 2011

BLACKADDAR B B KELLOGG

777850C					
PTA	+3.12SCC	+0.7PFL			
PTA	-671M	-32F	-14P		98R
PTA%		-.04	+.04		
PTAT	+1.30T			97R	8/14
D/AV	18025M 3.8	691F 3.2	576P		

MUELLERS TORNADO COURTNEY

1015201	5-05	91			
GOLD		%	FAT	%	PRT
2-03	2 310	12930	4.7	611	3.6
3-02	2 327	16500	4.3	706	3.7
5-03	2 320	15950	4.7	748	3.5
6-08	2 315	18350	4.1	760	3.4
7-08	2 270	12260	4.1	503	3.3
8-08	2 222	9350	3.6	335	3.1

2ND 4-YEAR-OLD - 2000 CENTRAL NATIONAL JR
NOM JR ALL-AMERICAN 4-YEAR-OLD - 2000
1ST 5-YEAR-OLD - 2001 CENTRAL NATIONAL JR
3RD 5-YEAR-OLD - 2001 SOUTHERN NATIONAL JR
1ST 5-YEAR-OLD - 2001 SOUTHERN NATIONAL JR
JR ALL-AMERICAN 5-YEAR-OLD - 2001

GRANDDAM: JONESVALE JADE CELEBRITY

957746	8-07	89			
DHIR		%	FAT	%	PRT
2-07	2 307	15810	4.7	736	3.4
3-06	2 350	22330	4.8	1077	3.5
4-11	2 357	20760	4.6	960	3.4
6-03	2 305	23010	4.7	1070	3.3
7-09	2 305	20640	4.5	937	3.3
LIFE	1853	111920	4.7	5223	3.4

Hall's Ayrshires

GENE HALL JR & PATRICK MYERS & FAMILY

346494 E. 760 Rd.
Cushing OK 74023
Gene: (405) 740-3085)

HALL'S MEDALIST PAULA

EXCELLENT-92 2E



HALL'S S MEDALIST PAULA

PUREBRED AYRSHIRE 01/16/05 FEMALE
 100404605 6-10 92 2E P5 +433
 NM\$ +262
 PTA +2.87SCC +3.8BPL +0.7DPR
 PTA +749M +12F +14P 57R
 PTA\$ +262CY 8/14
 PTA%
 PTAT -.20T 34R 8/14
 PPA +4900M +132F +127P

CLASS	ST9	SR8	BD7	DF7	RA5	RW7	LS6	FA7
	FU7	UH6	UW8	UC7	UD4	TP6	TL5	LR8
GOLD								
2-06	2	305	20450	3.6	736	2.9	592	
		364	23380	3.6	846	2.9	687	
3-07	2	305	25570	3.4	870	3.0	760	
		319	26580	3.4	900	3.0	791	
4-11	2	230	27160	3.1	850	3.1	835	
5-08	2	305	30100	3.4	1020	3.0	917	
		337	31430	3.4	1068	3.1	962	
6-10	2	287	25860	3.2	815	3.1	804	
7-08	2	305	18680	3.2	606	3.1	577	
		323	19100	3.3	628	3.1	595	
LIFE	1860	153510	3.3	5107	3.0	4674		

3RD 5-YEAR-OLD - 2010 SOUTHERN NATIONAL
 NOM ALL-AMERICAN 5-YEAR-OLD - 2010

SAGUENAYENNE KATE MEDALIST-ET

10027041C
 PTA +3.04SCC +2.8BPL +0.2DPR
 PTA -334M -23F -11P 92R
 PTA% -.06 -.01
 PTAT +.60T 74R 8/14
 D/AV 18890M 3.7 708F 3.1 592P 8.4T

ILLINI BRENDAN POLITA

100202306 9-10 85

GOLD				%	FAT	%	PRT
2-01	2	283	15090	3.8	573	2.9	431
3-01	2	297	19630	3.7	724	3.0	591
4-00	2	305	21230	3.2	680	2.9	625
		308	21330	3.2	686	2.9	629
5-02	2	305	13940	3.7	509	3.3	462
6-08	2	280	19130	3.5	662	2.9	560
7-10	2	305	15310	3.3	506	3.0	458
8-10	2	305	25980	2.6	676	2.9	754
		365	27510	2.6	712	2.9	803
10-06	2	305	15230	4.0	616	2.9	448
LIFE	2778	159940	3.4	5439	3.0	4774	

GRANDDAM: ILLINI DON POLITA

1010648

GOLD				%	FAT	%	PRT
2-03	2	299	12970	3.6	468	3.3	433
3-03	2	263	13110	4.6	607	3.4	440
4-02	2	256	13750	4.3	588	3.4	461
5-02	2	235	13660	4.0	553	3.1	417

Hall's Ayrshires

GENE HALL JR & PATRICK MYERS & FAMILY

346494 E. 760 Rd.
 Cushing OK 74023
 Gene: (405) 740-3085

KLER-VU RAMIUS CHRISTMAS EXCELLENT-92



KLER-VU RAMIUS CHRISTMAS

PUREBRED AYRSHIRE 12/24/09 FEMALE
69247784 3-06 92 P9 +502
NM\$ +207
PTA +3.24SCC +0.6PL +0.5DPR
PTA +952M +35F +26P 51R
PTA\$ +207CY 8/14
PTA%
PTAT +.80T -.01 -.02 45R 8/14
PPA +2640M +88F +69P
CLASS ST8 SR7 BD7 DF8 RA7 RW7 LS3 FA7
FU8 UH8 UW8 UC8 UD6 TP7 TL4 LR7
GOLD % FAT % PRT
2-02 3 305 25050 3.6 913 3.1 784
340 26650 3.7 983 3.1 838
3-02 2 305 23170 4.3 1005 3.0 693

2ND WINTER CALF - 2010 EASTERN STATES NAT'L
1ST WINTER YEARLING - 2011 INTERNATIONAL
ALL-AMERICAN WINTER YEARLING - 2011
1ST SR 2-YEAR-OLD - 2012 INTERNATIONAL
ALL-AMERICAN (TIE) SR 2-YEAR-OLD - 2012
1ST SR 3-YEAR-OLD - 2013 INTERNATIONAL
INTERMEDIATE CHAMPION - 2013 INTERNATIONAL
ALL-AMERICAN SR 3-YEAR-OLD - 2013

GALNEY-EPC GALANT RAMIUS

100216624
PTA +3.55SCC +0.2PL +1.3DPR
PTA +174M +3F +8P 96R
PTA% -.02 +.01
PTAT +1.20T 93R 8/14
D/AV 18962M 3.9 733F 3.2 599P 8.4T

PINEVILLE-FARM PARDNER LEXUS

100519361 5-06 92
GOLD % FAT % PRT
2-07 3 305 26180 4.2 1109 3.1 818
4-02 3 305 22030 4.5 993 3.1 680
312 22420 4.5 1010 3.1 695
5-02 3 305 36430 3.9 1414 2.9 1043
365 44520 4.1 1840 2.9 1280
6-02 3 305 36280 4.6 1686 3.0 1101
LIFE 1573 142650 4.4 6207 3.1 4378

GRANDDAM: PINEVILLE-FARM HEXEL

100241312 5-03 83
GOLD % FAT % PRT
2-02 2 276 18100 4.2 754 3.1 562
3-01 2 305 22620 4.2 955 3.1 700
316 23260 4.2 984 3.1 721
4-02 2 305 22900 4.1 950 3.1 719
350 24990 4.2 1044 3.2 789
5-03 2 305 18600 4.1 771 3.1 569
306 18630 4.1 773 3.1 570
6-03 2 305 17940 3.9 701 3.0 544
7-06 2 305 14200 4.0 571 3.2 455
326 14590 4.0 589 3.2 469
LIFE 1992 120580 4.1 4981 3.1 3766

Kler-Vu Dairy
TOM GILLETTE
5137 Old Route 12, Lyonsfalls, NY 13368
(315) 982-7707
j.gillette@southlewis.org

DES PRAIRIES TOOSSY

EXCELLENT-91



DES PRAIRIES TOOSSY

PUREBRED AYRSHIRE 09/02/09 FEMALE
 100590603 4-03 91 P9 +511

NM\$	+174			
PTA	+2.98SCC	-0.7PL	-0.3DPR	
PTA	+841M	+37F	+30P	36R
PTA\$	+174CY			8/14
PTA%		+0.2	+0.2	
PTAT	+0.80T		40R	8/14
PPA	+1871M	+101F	+74P	
CLASS	ST8 SR8 BD8 DF4 RA4 RW7 LS6 FA5			
	FU8 UH6 UW4 UC5 UD8 TP8 TL7 LR8			
GOLD		%	FAT %	PRT
2-09	3 299	26410	4.1	1071 3.1 815
3-09	3 305	21980	4.4	967 3.3 720

1ST FALL CALF - 2010 SOUTHERN NATIONAL
 HM ALL-AMERICAN FALL CALF - 2010
 3RD FALL YEARLING - 2011 INTERNATIONAL
 3RD FALL YEARLING - 2011 SOUTHERN NATIONAL
 HM ALL-AMERICAN FALL YEARLING - 2011

BEING EXTENSIVELY FLUSHED
 INQUIRIES WELCOME

AYR-PHOE IDEOSTAR-ET

101166601C
 PTA +2.80SCC +1.7PL +0.1DPR
 PTA +1005M +25F +23P 88R
 PTA% -0.7 -0.04
 PTAT +0.80T 80R 8/14
 D/AV 0M 0F 8.5T

DES PRAIRIES TOC

104025177C VG-87 CAN
 3-07 3 311 20335 4.4 902 3.5 701
 4-06 3 363 20631 4.5 919 3.5 728

GRANDDAM: DES PRAIRIES TIC TAC 3-ET

102008256C VG-88 CAN
 3-05 3 364 20858 4.3 888 3.7 774
 4-09 3 325 20860 4.2 873 3.6 758
 5-09 3 335 22216 3.9 873 3.5 774
 6-10 3 323 22664 3.8 853 3.5 794

Ullmstar Dairy
DAMIAN & KILEY ULLMER
 N9268 State Hwy 55, Seymour, WI 54165
 (920) 833-2995 • cell (920) 639-2375

MAPLE-DELL BURDETTE DEMPSEY-ET

14AY33



MAPLE-DELL BURDETTE DEMPSEY-ET

PUREBRED AYRSHIRE 03/10/12 MALE
65302787

			P9	+520	
PTA	+2.77SCC	+2.1PL	+0.2DPR		
PTA	+347M	+26F	+21P	47R	
PTA%		+ .08	+ .06		
PTAT	+1.90T		46R	8/14	

PALMYRA TRI-STAR BURDETTE-ET

100419568
PTA +2.82SCC +1.5PL +0.6DPR
PTA +716M +25F +27P 98R
PTA% -.02 +.02
PTAT +1.90T 95R 8/14
D/AV 19538M 3.9 758F 3.2 618P 8.5T

MAPLE-DELL TRIDENT DEE-ET

100510791 6-08 92 2E
GOLD % FAT % PRT
2-04 2 358 21010 4.7 984 3.6 749
3-05 2 365 26890 4.5 1208 3.4 906

#45 8/14 ELITE CPI LIST

NOM ALL-AMERICAN FALL CALF - 2008
NOM JR ALL-AMERICAN FALL CALF - 2008
NOM ALL-AMERICAN FALL YEARLING - 2009
HM JR ALL-AMERICAN FALL YEARLING - 2009
NOM ALL-AMERICAN SR 2-YEAR-OLD - 2010
HM JR ALL-AMERICAN SR 2-YEAR-OLD - 2010
NOM ALL-AMERICAN SR 3-YEAR-OLD - 2011
NOM JR ALL-AMERICAN SR 3-YEAR-OLD - 2011

GRADDAM: MAPLE-DELL ZORRO DAFOURTH

100257070 6-06 95 2E
GOLD % FAT % PRT
2-00 2 305 22380 4.3 958 3.3 737
3-00 2 310 22000 4.0 871 3.1 682
4-00 2 365 26200 4.6 1203 3.3 864
6-01 2 365 30950 4.5 1387 3.0 939
7-11 2 365 27930 4.3 1193 3.0 838
9-06 2 305 23220 4.7 1098 2.9 668
LIFE 2287 165180 4.4 7191 3.1 5148

NOM ALL-AMERICAN JR 2-YEAR-OLD - 2004
RES ALL-AMERICAN JR 3-YEAR-OLD - 2005
RES ALL-AMERICAN 4-YEAR-OLD - 2006



ACCELERATED GENETICS

1-800-451-9275
www.accelgen.com

For Procurement, Contact:
Jess Peter
(563) 380-9925 | jpeter@accelgen.com

PLUM-BOTTOM BURDETTA RYDER

76AY761 POLLED



PLUM-BOTTOM BURDETTA RYDER

PUREBRED AYRSHIRE 03/05/13 MALE
100662014

			P-	+457
PTA	+2.88SCC	+0.4PL	-0.3DPR	
PTA	+394M	+13F	+16P	43R
PTA%		-.01	+.03	
PTAT	+.70T		44R	8/14

PALMYRA TRI-STAR BURDETTE-ET

100419568
PTA +2.82SCC +1.5PL +0.6DPR
PTA +716M +25F +27P 98R
PTA% -.02 +.02
PTAT +1.90T 95R 8/14
D/AV 19538M 3.9 758F 3.2 618P 8.5T

PLUM-BOTTOM LENNON RHODIE

100582064 4-10 87

DHI		%	FAT	%	PRT
2-06	2	305	11890	3.7	442 3.3 398
		333	12730	3.8	479 3.4 430
3-07	2	305	15090	3.4	515 3.2 483
		316	15310	3.4	524 3.2 492

GRANDDAM:

MAULFAIR ACRES LAWYER REPUNZEL

100325384 8-06 86

DHI		%	FAT	%	PRT
4-10	2	305	13703	3.6	494 2.9 404
6-01	2	271	10570	4.6	488 3.1 329
7-00	2	270	12912	2.7	347 2.9 377
7-11	2	305	12205	3.7	448 3.1 377
		360	13034	3.7	480 3.1 407
9-01	2	305	15866	3.8	596 3.1 499



A DIVISION OF INGURAN LLC

(570) 833-5123
info@Taurus-ST.com
www.Taurus-ST.com





A member of the U.S. Livestock Genetics Export
1224 Alton Darby Creek Road, Suite B
Columbus, Ohio 43228

(614) 335-0020 | (614) 335-0023 Fax | info@usayrshire.com

www.USAYrshire.com